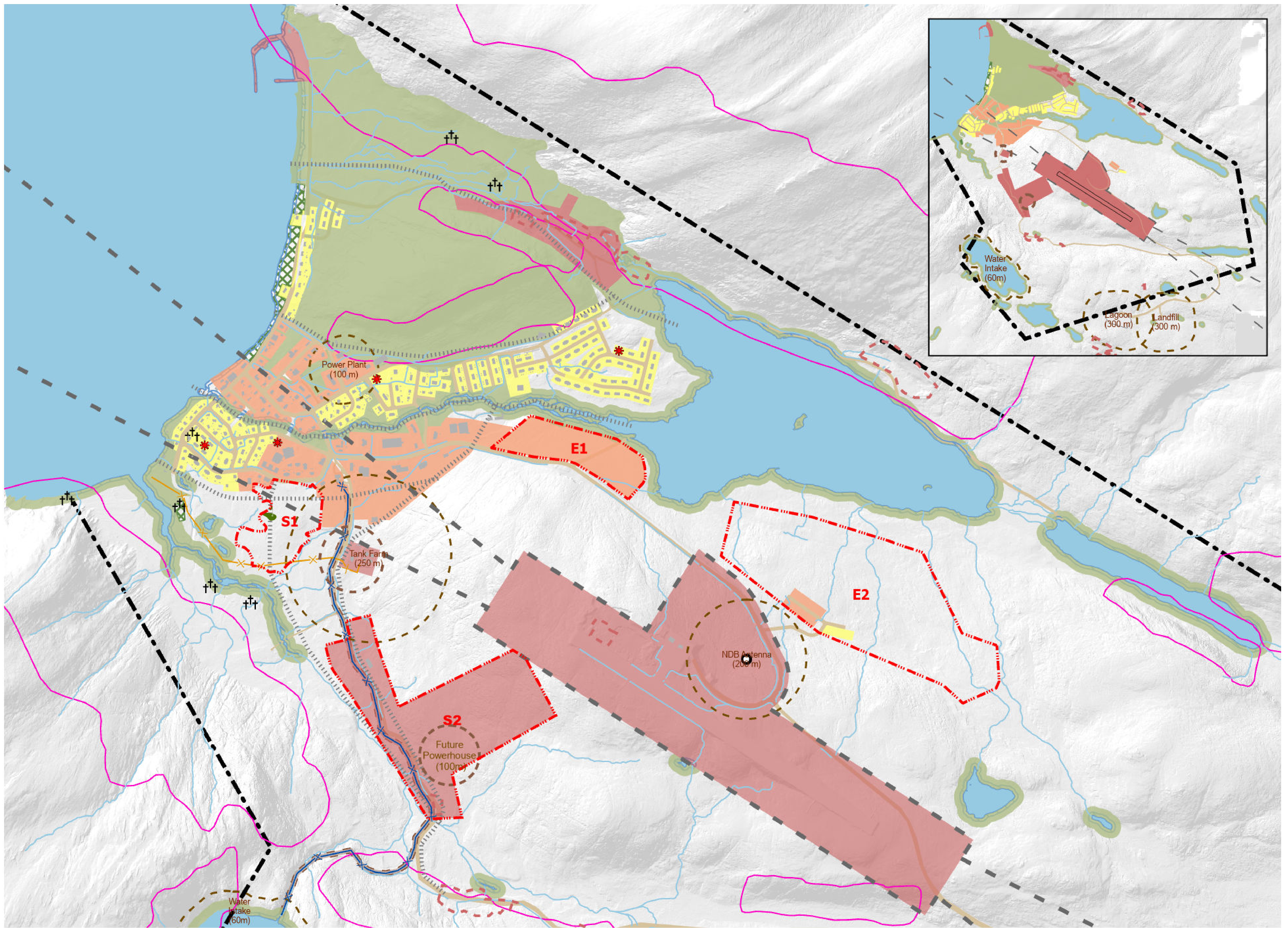


# Community Master Plan of Kangiqsujuaq - Land Use Plan 2025-2045



ZONING DESIGNATION	RESIDENTIAL & LOW IMPACT ACTIVITIES	VILLAGE CORE & MEDIUM IMPACT ACTIVITIES	INDUSTRIAL & HIGH IMPACT ACTIVITIES	NUNA	CONSERVATION	
<b>Permitted Uses</b>	<ul style="list-style-type: none"> <li>Residential/Housing                             <ul style="list-style-type: none"> <li>Single-family, duplex, multiplex</li> </ul> </li> <li>Light commercial/retail                             <ul style="list-style-type: none"> <li>Convenience stores, small shop, restaurant, laundromat, hairdresser</li> </ul> </li> <li>Small Community amenities                             <ul style="list-style-type: none"> <li>Small workshop, community freezer</li> <li>Library, daycare, FM radio</li> <li>Youth house, Elder house, sewing centre</li> <li>Museum</li> </ul> </li> <li>Medium commercial/retail                             <ul style="list-style-type: none"> <li>Cultural Centre</li> <li>Co-op, Northern store</li> <li>Hotel</li> <li>Office</li> </ul> </li> <li>Large community amenities                             <ul style="list-style-type: none"> <li>Schools</li> <li>Health centre; hospital</li> <li>Arena; recreation centre</li> <li>Church</li> <li>Building Office</li> <li>Church</li> </ul> </li> </ul>	<ul style="list-style-type: none"> <li>Residential/Housing                             <ul style="list-style-type: none"> <li>Single-Family, Duplex, multiplex</li> </ul> </li> <li>Small Community amenities                             <ul style="list-style-type: none"> <li>Small workshop, community freezer</li> <li>Library, daycare, FM radio</li> <li>Youth house, Elder house, sewing centre</li> <li>Museum</li> </ul> </li> <li>Medium commercial/retail                             <ul style="list-style-type: none"> <li>Cultural Centre</li> <li>Co-op, Northern store</li> <li>Hotel</li> <li>Office</li> </ul> </li> <li>Large community amenities                             <ul style="list-style-type: none"> <li>Schools</li> <li>Health centre; hospital</li> <li>Arena; recreation centre</li> <li>Church</li> <li>Building Office</li> <li>Church</li> </ul> </li> </ul>	<ul style="list-style-type: none"> <li>Light Industrial uses                             <ul style="list-style-type: none"> <li>Boat Storage</li> <li>Water treatment plant storage</li> <li>Construction camp, transit house</li> <li>Warehouse</li> <li>Community freezer, Green house</li> <li>Workshop, Garage</li> <li>Firehall</li> <li>Gas Station</li> </ul> </li> <li>Telecommunications                             <ul style="list-style-type: none"> <li>Satellite, equipment buildings</li> </ul> </li> <li>Light commercial/retail                             <ul style="list-style-type: none"> <li>Convenience stores, small shop, restaurant, laundromat, hairdresser</li> </ul> </li> </ul>	<ul style="list-style-type: none"> <li>Medium commercial/ retail                             <ul style="list-style-type: none"> <li>Co-op, Northern store</li> <li>Hotel</li> <li>Office</li> </ul> </li> <li>Light Industrial uses                             <ul style="list-style-type: none"> <li>Boat Storage</li> <li>Water treatment plant storage</li> <li>Construction camp, transit house</li> <li>Warehouse</li> <li>Community freezer, Green house</li> <li>Workshop, Garage</li> <li>Firehall</li> <li>Gas Station</li> </ul> </li> <li>Heavy Industrial uses                             <ul style="list-style-type: none"> <li>Quarry, sandpit</li> <li>Land fill</li> <li>Wastewater treatment (lagoons)</li> <li>Tank farm</li> <li>Power plant</li> <li>Windmill</li> <li>Transportation</li> <li>Airport, Marina</li> </ul> </li> <li>Telecommunications                             <ul style="list-style-type: none"> <li>Satellite, equipment buildings</li> </ul> </li> </ul>	<ul style="list-style-type: none"> <li>Community activities                             <ul style="list-style-type: none"> <li>Dog team</li> <li>Cabins and camps</li> <li>Harvesting</li> <li>Berry picking</li> <li>Shooting range</li> </ul> </li> </ul>	<ul style="list-style-type: none"> <li>Protected natural areas                             <ul style="list-style-type: none"> <li>Cultural heritage sites identified by community</li> <li>Ecologically sensitive areas</li> <li>Zones for natural hazard risk mitigation and management</li> </ul> </li> </ul>
USE PERMITTED IN ALL ZONES						
OPEN SPACE (PARK, HOCKEY RINK, BEACH, PLAYGROUND, GOLF COURSE, PICNIC AREA, CEMETERY, MONUMENT, SPORTS FIELD, GATHERING AREAS)						

**LEGEND**

**LAND USE DESIGNATIONS (impact-based)**

- High Impact (industrial)
- Medium Impact (commercial)
- Low Impact (residential)
- Conservation
- Nuna
- Municipal boundary

**TRANSPORTATION**

- Snowmobile Trail
- Airport Takeoff & Landing Zone

**RESTRICTED DEVELOPMENT AREAS**

- Shore Protection Strip
- Quarry & Borrow Pit (lease perimeter)
- Constraint Buffer
- Avalanche zone
- Fuel Pipeline
- Water Pipeline

**OTHER**

- Open Space
- Expansion zones
- Cemetery
- Golf Courses
- NDB Antenna Site
- Playgrounds

IMPORTANT TO NOTE: To ensure the safety and security of village residents and to protect the environment, certain land uses, such as playgrounds, industrial uses, and dog teams, must adhere to additional, specific constraints that will limit the uses to particular sites. See the zoning bylaw for specifications.

By-law number	Date of Adoption
2026-03	April 14th, 2026



**NOTES**

Data Source: KRG (2024), CRGHAG(2024), MERN (2021)  
Date: 4/14/2026

1:13,000

0 280 560 840 m