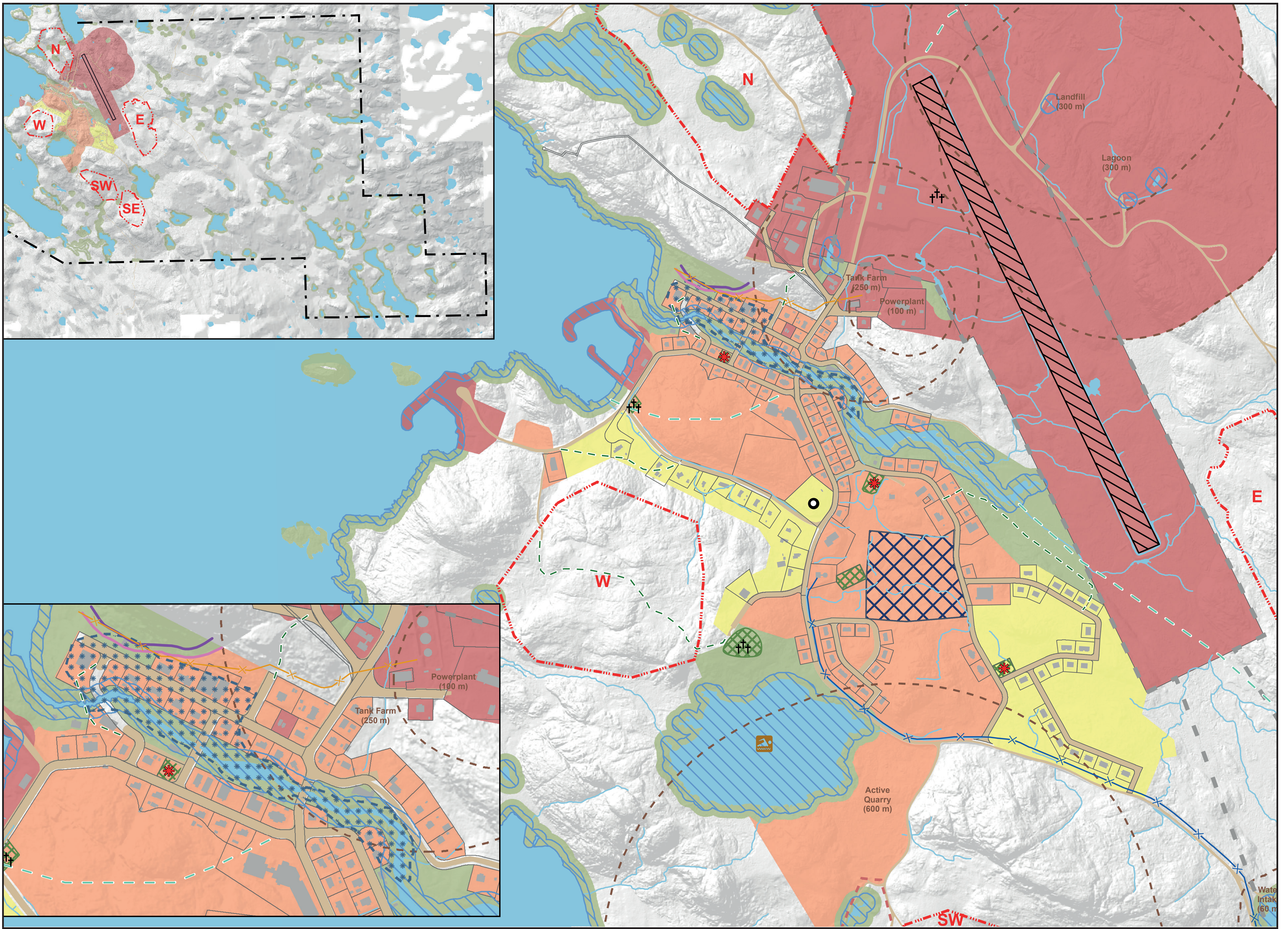


# Community Master Plan of Quaataq - Land Use Plan 2025-2045



ZONING DESIGNATION	RESIDENTIAL & LOW IMPACT ACTIVITIES	VILLAGE CORE & MEDIUM IMPACT ACTIVITIES	INDUSTRIAL & HIGH IMPACT ACTIVITIES	NUNA	CONSERVATION	
<b>Permitted Uses</b>	<ul style="list-style-type: none"> <li>Residential/Housing                             <ul style="list-style-type: none"> <li>Single-family, duplex, multiplex</li> </ul> </li> <li>Light commercial/retail                             <ul style="list-style-type: none"> <li>Convenience stores, small shop, restaurant, laundromat, hairdresser</li> </ul> </li> <li>Small Community amenities                             <ul style="list-style-type: none"> <li>Small workshop, community freezer</li> <li>Library, daycare, FM radio</li> <li>Youth house, Elder house, sewing centre</li> <li>Museum</li> </ul> </li> <li>Medium commercial/retail                             <ul style="list-style-type: none"> <li>Cultural Centre</li> <li>Co-op, Northern store</li> <li>Hotel</li> <li>Office</li> </ul> </li> <li>Large community amenities                             <ul style="list-style-type: none"> <li>Schools</li> <li>Health centre; hospital</li> <li>Arena; recreation centre</li> <li>Church</li> <li>Building Office</li> <li>Church</li> </ul> </li> </ul>	<ul style="list-style-type: none"> <li>Residential/Housing                             <ul style="list-style-type: none"> <li>Single-Family, Duplex, multiplex</li> </ul> </li> <li>Small Community amenities                             <ul style="list-style-type: none"> <li>Small workshop, community freezer</li> <li>Library, daycare, FM radio</li> <li>Youth house, Elder house, sewing centre</li> <li>Museum</li> </ul> </li> <li>Medium commercial/retail                             <ul style="list-style-type: none"> <li>Cultural Centre</li> <li>Co-op, Northern store</li> <li>Hotel</li> <li>Office</li> </ul> </li> <li>Large community amenities                             <ul style="list-style-type: none"> <li>Schools</li> <li>Health centre; hospital</li> <li>Arena; recreation centre</li> <li>Church</li> <li>Building Office</li> <li>Church</li> </ul> </li> </ul>	<ul style="list-style-type: none"> <li>Light Industrial uses                             <ul style="list-style-type: none"> <li>Boat Storage</li> <li>Water treatment plant storage</li> <li>Construction camp, transit house</li> <li>Warehouse</li> <li>Community freezer, Green house</li> <li>Workshop, Garage</li> <li>Firehall</li> <li>Gas Station</li> </ul> </li> <li>Telecommunications                             <ul style="list-style-type: none"> <li>Satellite, equipment buildings</li> </ul> </li> <li>Light commercial/retail                             <ul style="list-style-type: none"> <li>Convenience stores, small shop, restaurant, laundromat, hairdresser</li> </ul> </li> </ul>	<ul style="list-style-type: none"> <li>Medium commercial/ retail                             <ul style="list-style-type: none"> <li>Co-op, Northern store</li> <li>Hotel</li> <li>Office</li> </ul> </li> <li>Light Industrial uses                             <ul style="list-style-type: none"> <li>Boat Storage</li> <li>Water treatment plant storage</li> <li>Construction camp, transit house</li> <li>Warehouse</li> <li>Community freezer, Green house</li> <li>Workshop, Garage</li> <li>Firehall</li> <li>Gas Station</li> </ul> </li> <li>Heavy Industrial uses                             <ul style="list-style-type: none"> <li>Quarry, sandpit</li> <li>Land fill</li> <li>Wastewater treatment (lagoons)</li> <li>Tank farm</li> <li>Power plant</li> <li>Windmill</li> <li>Transportation</li> <li>Airport, Marina</li> </ul> </li> <li>Telecommunications                             <ul style="list-style-type: none"> <li>Satellite, equipment buildings</li> </ul> </li> </ul>	<ul style="list-style-type: none"> <li>Community activities                             <ul style="list-style-type: none"> <li>Dog team</li> <li>Cabins and camps</li> <li>Harvesting</li> <li>Berry picking</li> <li>Shooting range</li> </ul> </li> </ul>	<ul style="list-style-type: none"> <li>Protected natural areas                             <ul style="list-style-type: none"> <li>Cultural heritage sites identified by community</li> <li>Ecologically sensitive areas</li> <li>Zones for natural hazard risk mitigation and management</li> </ul> </li> </ul>
USE PERMITTED IN ALL ZONES						
OPEN SPACE (PARK, HOCKEY RINK, BEACH, PLAYGROUND, GOLF COURSE, PICNIC AREA, CEMETERY, MONUMENT, SPORTS FIELD, GATHERING AREAS)						

**LEGEND**

**LAND USE DESIGNATIONS (impact-based)**

- High Impact (Industrial)
- Medium Impact (Village Core)
- Low Impact (Residential)
- Conservation
- Nuna

**CONSTRUCTION PROHIBITED ZONES**

- Shore Protection Strip
- Icing
- Constraints Buffers
- Quarry (Lease perimeter)
- Avalanche zone (1/100 yr.)
- Avalanche zone (1/1000 yr.)
- Water Pipeline
- Water Pipeline

**TRANSPORTATION**

- Airport Takeoff & Landing Zone
- Existing Road
- Snowmobile Trail
- Walking Trail

**OTHER**

- Municipal Boundary
- Future School Parcel
- Open Space
- Expansion Zone
- Playgrounds
- NDB Communication Site
- Cemetery
- Swimming Area

IMPORTANT TO NOTE: To ensure the safety and security of village residents and to protect the environment, certain land uses, such as playgrounds, industrial uses, and dog teams, must adhere to additional, specific constraints that will limit the uses to particular sites. See the zoning bylaw for specifications.

By-law number	Date of Adoption
BL2025-02	May 20th, 2025



**NOTES**

Data Source: Polygeo (2023), NGI (2000), KRG (2024), CRGH AG(2024), MERN (2021)  
Date: 2025-01-06

19 000  
0 190 380 570 m