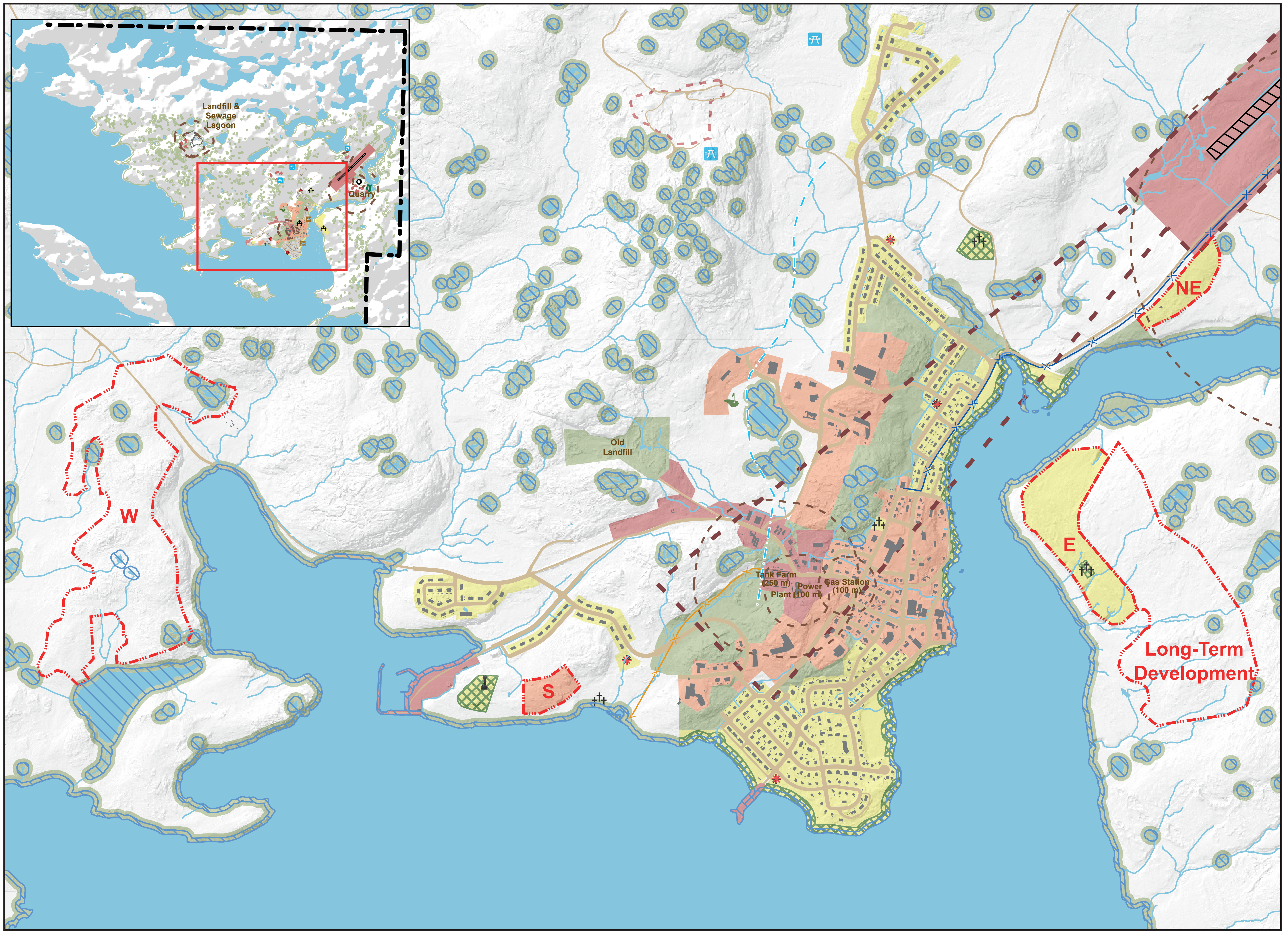


Community Master Plan of Inukjuak - Land Use Plan 2025-2045



ZONING DESIGNATION	RESIDENTIAL LOW IMPACT	VILLAGE CORE & MEDIUM IMPACT ACTIVITIES	INDUSTRIAL & HIGH IMPACT ACTIVITIES	NUNA	CONSERVATION	
Permitted Uses	<ul style="list-style-type: none"> Residential/Housing <ul style="list-style-type: none"> Single-family, duplex, multiplex Light Commercial/Retail <ul style="list-style-type: none"> Convenience stores, small shop, restaurant, laundromat, hairdresser Small Community Amenities <ul style="list-style-type: none"> Small workshop, community freezer Library, daycare, FM radio Youth house, Elder house, sewing centre Museum 	<ul style="list-style-type: none"> Residential/Housing <ul style="list-style-type: none"> Single-Family, Duplex, multiplex Small Community Amenities <ul style="list-style-type: none"> Small workshop, community freezer Library, daycare, FM radio Youth house, Elder house, sewing centre Museum Medium Commercial/Retail <ul style="list-style-type: none"> Co-op, Northern store Hotel Office Large Community Amenities <ul style="list-style-type: none"> Schools Health centre; hospital Arena; recreation centre Church Building Office Church 	<ul style="list-style-type: none"> Light Industrial <ul style="list-style-type: none"> Boat Storage Water treatment plant storage Construction camp, transit house Warehouse Community freezer, Green house Workshop, Garage Firehall Gas Station Telecommunications <ul style="list-style-type: none"> Satellite, equipment buildings Light Commercial/Retail <ul style="list-style-type: none"> Convenience stores, small shop, restaurant, laundromat, hairdresser 	<ul style="list-style-type: none"> Medium Commercial/Retail <ul style="list-style-type: none"> Co-op, Northern store Hotel Office Light Industrial <ul style="list-style-type: none"> Boat Storage Water treatment plant storage Construction camp, transit house Warehouse Community freezer, Green house Workshop, Garage Firehall Gas Station Heavy Industrial <ul style="list-style-type: none"> Quarry, sandpit Land fill Wastewater treatment Tank farm Power plant Windmill Transportation Airport, Marina Telecommunications <ul style="list-style-type: none"> Satellite, equipment buildings 	<ul style="list-style-type: none"> Community Activities <ul style="list-style-type: none"> Dog team Cabins and camps Harvesting Berry picking Shooting range 	<ul style="list-style-type: none"> Protected Natural Areas <ul style="list-style-type: none"> Cultural heritage sites identified by community Ecologically sensitive areas Zones for natural hazard risk mitigation and management
USE PERMITTED IN ALL ZONES						
OPEN SPACE (PARK, HOCKEY RINK, BEACH, PLAYGROUND, GOLF COURSE, PICNIC AREA, CEMETERY, MONUMENT, SPORTS FIELD, GATHERING AREAS)						

LEGEND

LAND USE DESIGNATIONS (impact-based)

- High Impact (Industrial)
- Medium Impact (Village Core)
- Low Impact (Residential)
- Conservation
- Nuna

CONSTRUCTION PROHIBITED ZONES

- Shore Protection Strip
- Quarry and Borrow Pit
- Constraints Buffers
- Water Pipeline
- Fuel Pipeline

TRANSPORTATION

- Airport Takeoff & Landing Zone
- Existing Road
- Snowmobile Trail

OTHER

- Municipal Limits
- Expansion Zone
- Open Space
- Cemetery
- Golf Courses
- NDB Communication Site
- Picnic Area
- Playgrounds
- Swimming Area
- Monument

IMPORTANT TO NOTE: To ensure the safety and security of village residents and to protect the environment, certain land uses, such as playgrounds, industrial uses, and dog teams, must adhere to additional, specific constraints that will limit the uses to particular sites. See the zoning bylaw for specifications.

By-law number	Date of Adoption
2025-02	April 1, 2025



NOTES

Data Source: KRG (2024), CRGHAG(2024), MERN (2021)
Date: 2025-03-17

Adoption Date: 2025-04-01

1:14 000

0 300 600 900 m