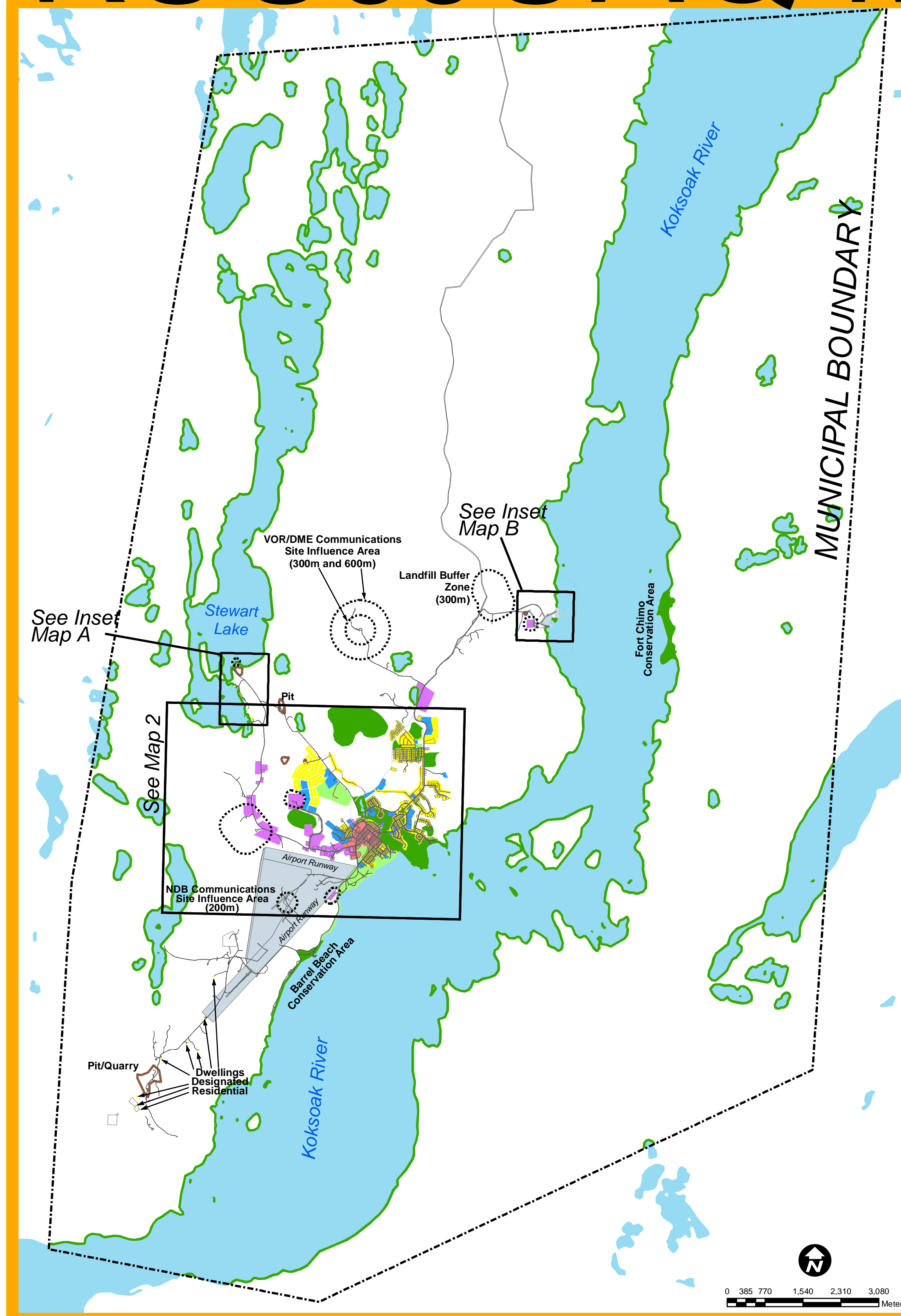
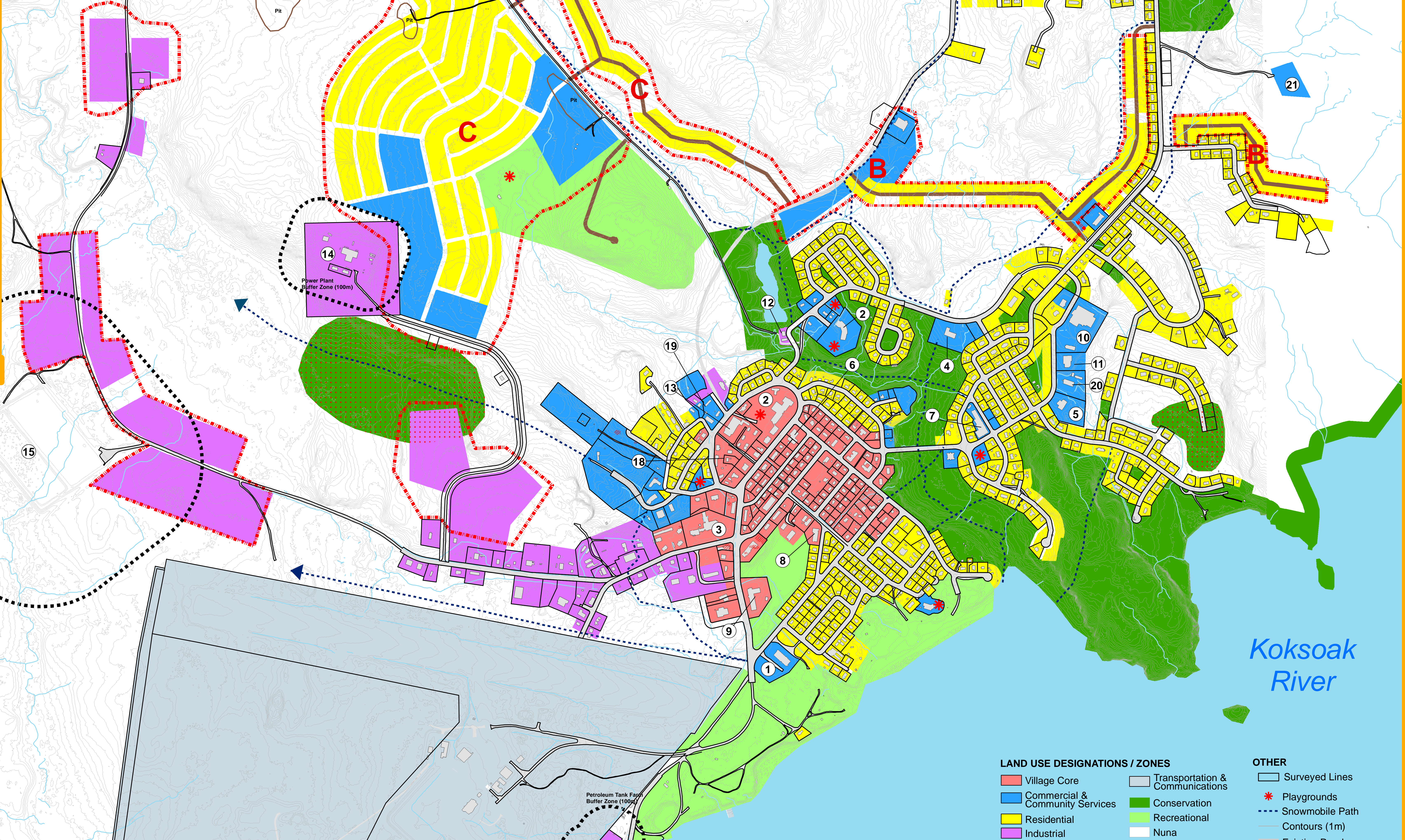
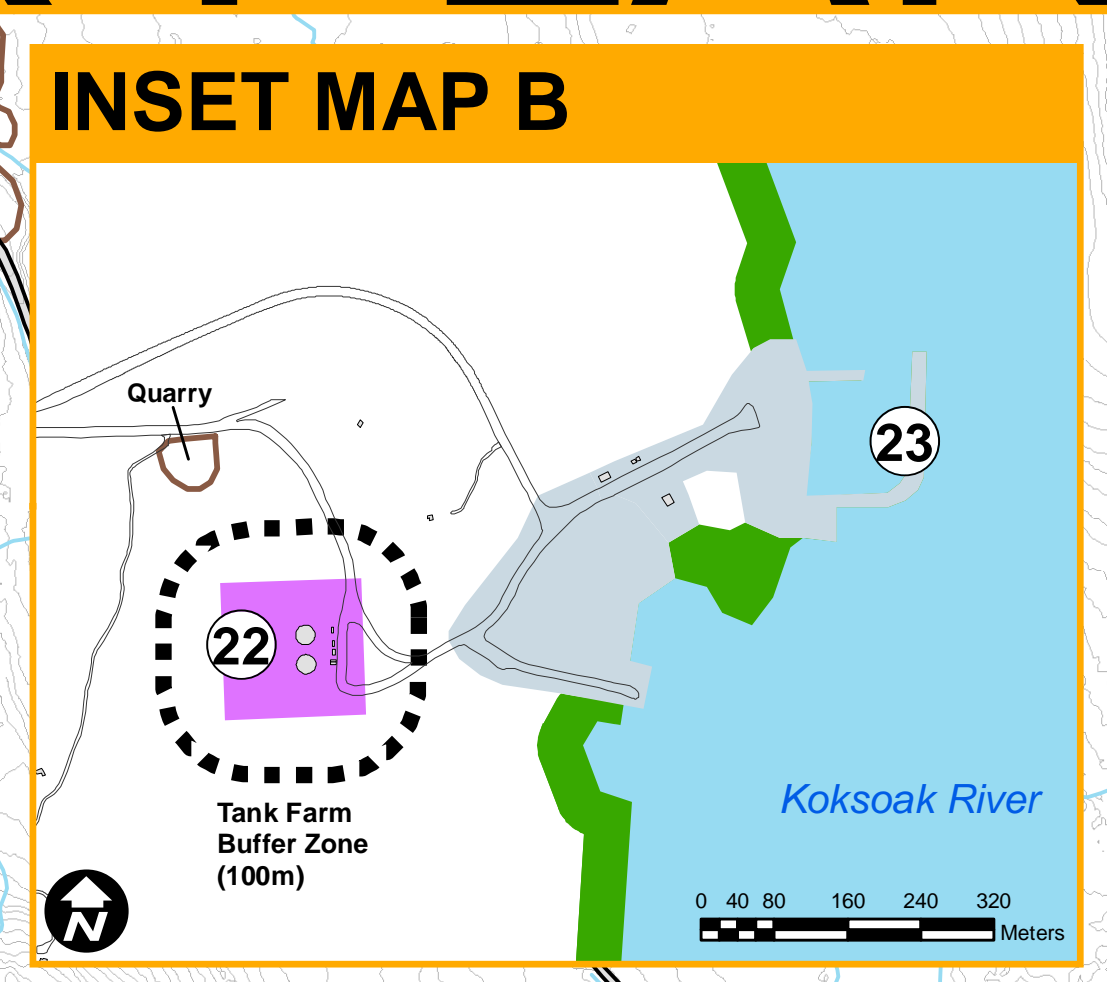
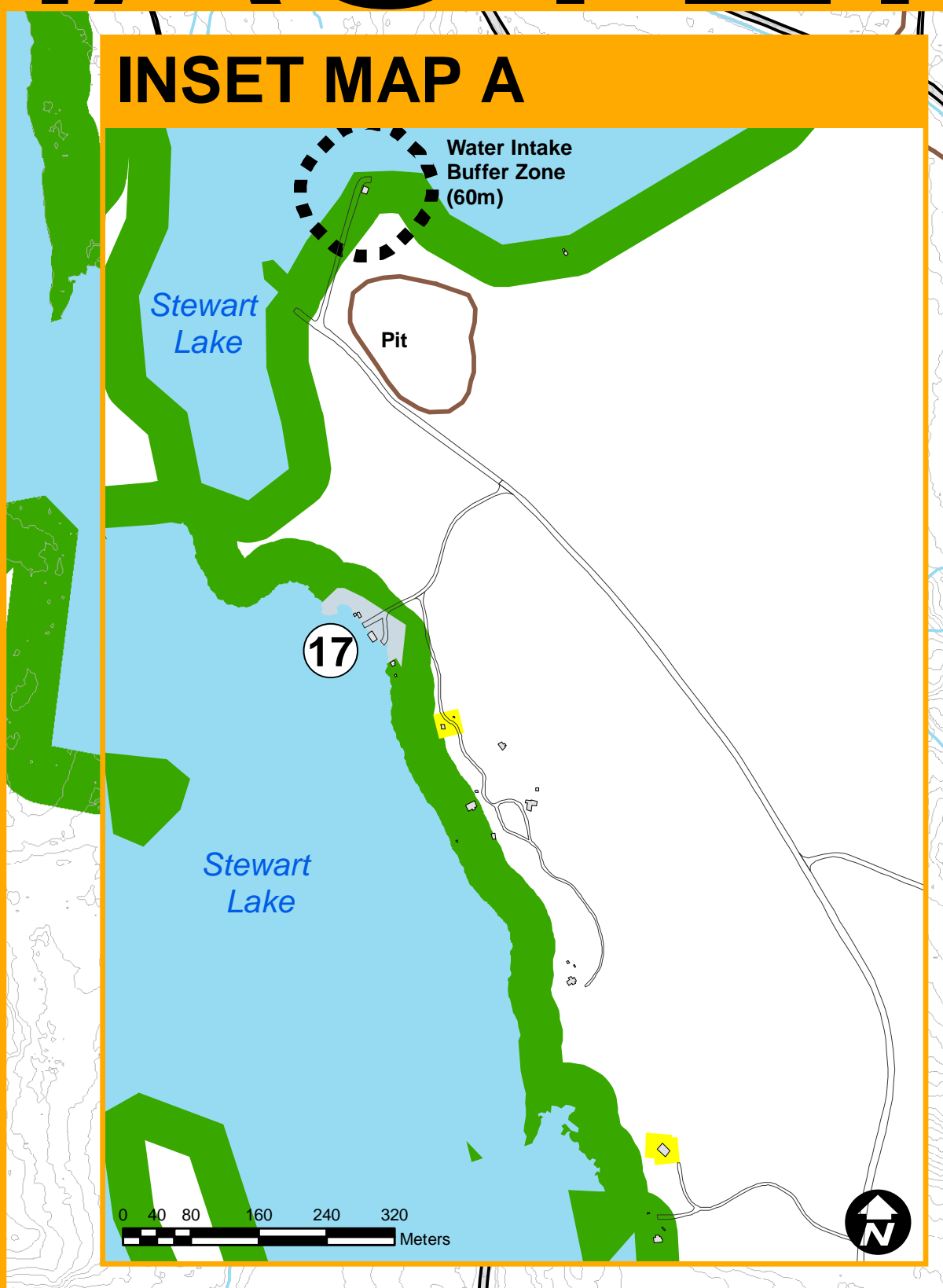


KUUJJUAQ MASTER PLAN

2015-2035



MAP 1: MUNICIPAL BOUNDARY MAP



COMMUNITY FEATURES

- 1 Northern Village Municipal Office Katittavik Town Hall
- 2 Schools
- 3 Health Centre
- 4 CIBC & Landholding Office
- 5 Kativik Municipal Housing Bureau
- 6 Kativik Regional Government Office
- 7 Co-op Store - Newviq
- 8 Co-op Hotel
- 9 Kuujuaq Inn
- 10 Arena & Swimming Pool
- 11 Kativik School Board
- 12 Water Supply Plant
- 13 Northern Store
- 14 Hydro Quebec Power Plant
- 15 Sewage Lagoon
- 16 Airport
- 17 Float Plane Base
- 18 Catholic Church
- 19 Anglican Church
- 20 Nunavik Regional Health Board
- 21 Cemetery
- 22 Tank Farm
- 23 Marine Infrastructure

PERMITTED USES

(REFER TO PART 5 - ZONE REGULATIONS - ZONING BY-LAW)

RESIDENTIAL	VILLAGE CORE	COMMERCIAL & COMMUNITY SERVICES	INDUSTRIAL	RECREATIONAL	CONSERVATION	TRANSPORTATION & COMMUNICATIONS	NUNA
<ul style="list-style-type: none"> • Bed and breakfast • Craft studio • Day care centre • Dwelling, detached • Dwelling, semi-detached • Dwelling, duplex • Dwelling, multi-unit • Mobile home • Elders' facility • Group home • Home occupation • Park or playground • Place of worship • Secondary suite • A use similar to the uses permitted in this zone 	<ul style="list-style-type: none"> • Bank • Cemetery • Community Centre • Convenience Store • Craft Studio • Day care centre • Dwelling, multi unit • Dwelling row-house • Group home • Health care facility • Home occupation • Hotel • Municipal/government office • Office • Park or playground • Personal or business service • Place of Worship • Police Station Post office • Radio and television station • Recreation Facility • Restaurant • Retail Store • Youth Centre • A use similar to uses permitted in this zone 	<ul style="list-style-type: none"> • Bank • Cemetery • Community Centre • Convenience Store • Communications facility • Community Hall or Centre • Day care centre • Dwelling unit(s) in a non-residential building, provided they are either at the back of the building or above the ground floor • Educational Facility • Elder's facility • Fire hall • Gas Station • Group home • Health Care facility • Home occupation • Hotel • Municipal/government office • Office • Park or playground • Parking Lot • Personal or Business Service • Place of Worship • Police Station • Post office • Radio and television station • Recreation Facility • Restaurant • Retail Store • Youth Centre • A use similar to uses permitted in this zone 	<ul style="list-style-type: none"> • Agricultural use • Automotive repair, sales or rental shop • Building supply or contractors' shop • Caretaker unit • Communications facility • Dog team • Gas station • Hazardous goods storage • Outdoor storage • Manufacturing and industrial plant • Petroleum tanks • Power plant • Pit • Quarry • Rental shop • Tank farm • Warehouse • Water intake • Water treatment plant • Workers' camp (temporary) • A use similar to the uses permitted in this zone 	<ul style="list-style-type: none"> • Beach shack • Boat storage • Breakwater • Communications facility • Dock • Monument, cairn, or statue • Park or playground • Shed to store equipment for traditional, cultural, and recreational activities • Sports field • Temporary outdoor storage during sealift • Washroom facility • A use similar to the uses permitted in this zone 	<ul style="list-style-type: none"> • Snow fence • A use similar to uses permitted in this zone 	<ul style="list-style-type: none"> • Airport and related uses • Communications facility • Floatplane base • Pit • Quarry • Sealift facility and other marine infrastructure • A use similar to the uses permitted in this zone 	<ul style="list-style-type: none"> • Cabin • Cemetery • Dog team • Commercial harvesting • Communications facility • Permanent hunting and fishing cabins or camps • Pit • Quarry • Recreation-related development or activities • Resource exploration and development • Sewage lagoon • Snow fence • Solid waste disposal site • Temporary tenting or camping • Water intake • Water reservoir • Water treatment plant • A use similar to the uses permitted in this zone

LAND USE DESIGNATIONS / ZONES

- Village Core
- Commercial & Community Services
- Residential
- Industrial
- Transportation & Communications
- Conservation
- Recreational
- Nuna

OTHER

- Surveyed Lines
- Playgrounds
- Snowmobile Path
- Contours (1m)
- Existing Road
- Proposed Road
- Travelled Roadbed
- Pit/Quarry

OVERLAYS

- FUTURE DEVELOPMENT AREAS
 - A Short-Term Potential
 - B Mid-Term Potential
 - C Long-Term Potential
- Contaminated Areas (Approximate)
- Berry Picking Areas

MAP 2: LAND USE DESIGNATION AND ZONE MAP