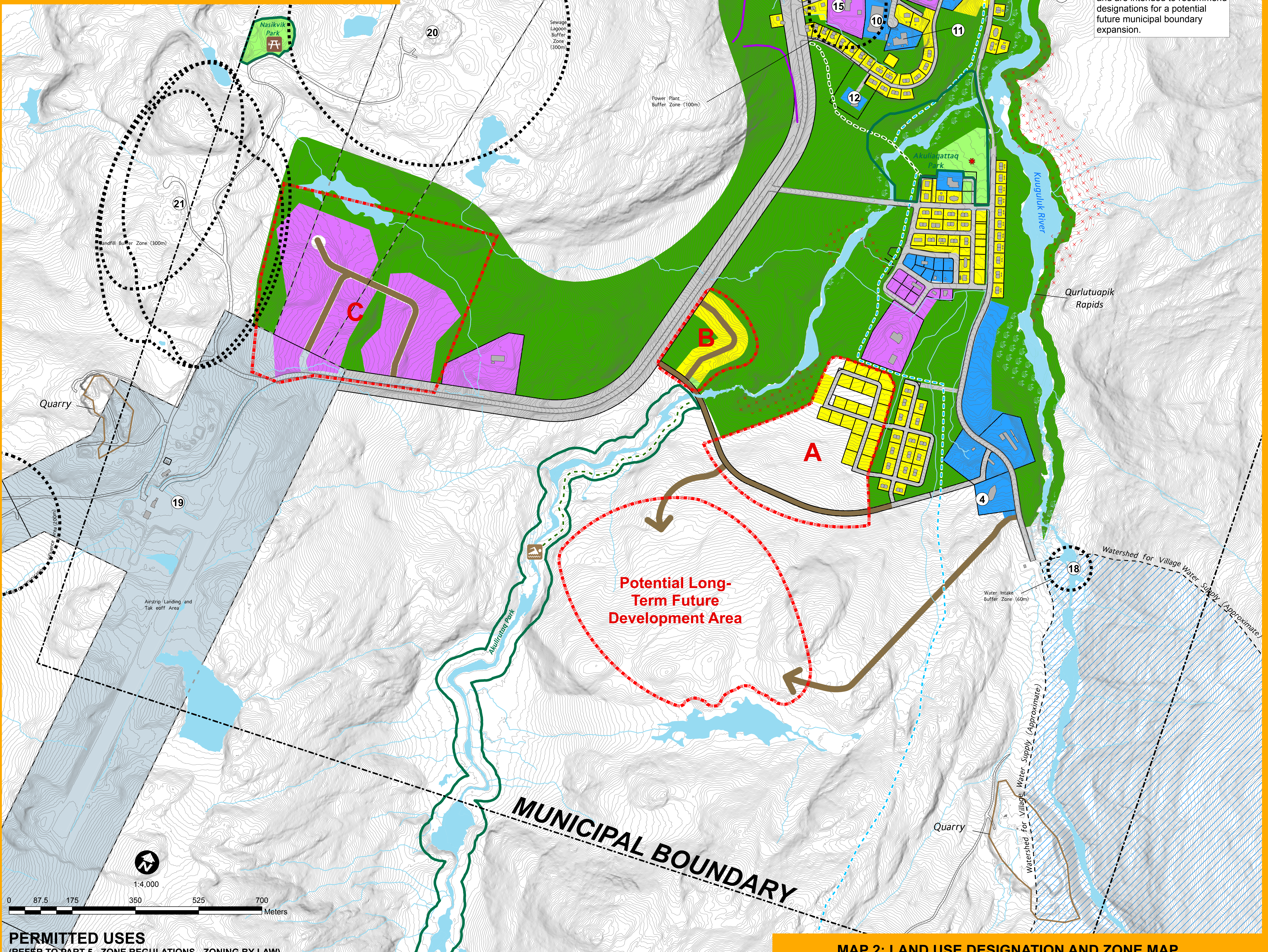


MAP 1: MUNICIPAL BOUNDARY MAP



MAP 2: LAND USE DESIGNATION AND ZONE MAP

- ### COMMUNITY FEATURES
- 1 Northern Village Municipal Office
 - 2 Schools
 - 3 Health Centre
 - 4 Landholding Office
 - 5 Naturalik Community Centre
 - 6 Co-op Hotel
 - 7 Co-op Store
 - 8 Northern Store
 - 9 Baseball Diamond & Soccer Field
 - 10 Arena
 - 11 Rehabilitation Centre
 - 12 Adult Education Centre
 - 13 Future Elder's Home
 - 14 Swimming Pool
 - 15 Power Plant
 - 16 Tank Farm
 - 17 Water Reservoir
 - 18 Water Intake
 - 19 Airport
 - 20 Sewage Lagoon
 - 21 Landfill
 - 22 Marine Facility

- ### LAND USE DESIGNATIONS / ZONES
- Village Core
 - Commercial & Community Services
 - Residential
 - Industrial
 - Transportation & Communications
 - Conservation
 - Recreational
 - Nuna
- ### Potential Development Areas
- A
- ### TRANSPORTATION
- Existing Road
 - Proposed Road
 - Snowmobile Trail
 - Walking Trail
 - Airport Approach
- ### OVERLAYS
- Parks
 - Soil Movement Areas
 - Flood Risk Areas
- ### OTHER
- Playgrounds
 - Cemetery
 - Golf Course
 - Swimming Area
 - Avalanche Zone
 - Contour (1m)

Note: Land use designations shown outside the municipal boundary are suggested only and are intended to recommend designations for a potential future municipal boundary expansion.

PERMITTED USES
(REFER TO PART 5 - ZONE REGULATIONS - ZONING BY-LAW)

RESIDENTIAL	VILLAGE CORE	COMMERCIAL & COMMUNITY SERVICES	INDUSTRIAL	RECREATIONAL	CONSERVATION	TRANSPORTATION & COMMUNICATIONS	NUNA
<ul style="list-style-type: none"> • Bed and breakfast • Craft studio • Day care centre • Dwelling, detached • Dwelling, semi-detached • Dwelling, duplex • Dwelling, multi-unit 	<ul style="list-style-type: none"> • Mobile home • Elders' facility • Group home • Home occupation • Park or playground • Place of worship • Secondary suite • A use similar to the uses permitted in this zone 	<ul style="list-style-type: none"> • Bank • Cemetery • Community Centre • Convenience Store • Communications facility • Office • Community Hall or Centre • Day care centre • Police Station Post office • Radio and television station • Restaurant • Retail Store • Youth Centre • A use similar to the uses permitted in this zone 	<ul style="list-style-type: none"> • Bank • Cemetery • Community Centre • Convenience Store • Communications facility • Office • Community Hall or Centre • Day care centre • Health Care facility • Home occupation • Hotel • Municipal/government office • Office • Park or playground • Parking lot • Personal or business service • Place of Worship • Police Station 	<ul style="list-style-type: none"> • Dwelling unit(s) in a non-residential building, provided they are either at the back of the building or above the ground floor • Educational Facility • Elder's facility • Fire hall • Gas Station • Group home • Health care facility • Home occupation • Hotel • Municipal/government office • Office • Park or playground • Parking lot • Personal or business service • Place of Worship 	<ul style="list-style-type: none"> • Snow fence • A use similar to the uses permitted in this zone 	<ul style="list-style-type: none"> • Airport and related uses • Communications facility • Fixed-base aircraft • Pit • Quarry • Sealift facility and other marine infrastructure • A use similar to the uses permitted in this zone 	<ul style="list-style-type: none"> • Cabin • Cemetery • Dog team • Commercial harvesting • Communications facility • Permanent hunting and fishing cabins or camps • Pit • Quarry • Recreation-related development or activities • Resource exploration and development • Sewage lagoon • Snow fence • Solid waste disposal site • Temporary tenting or camping • Water intake • Water reservoir • Water treatment plant • A use similar to the uses permitted in this zone