



What is  
Pijunnaqunga?

How it  
Works?

Why  
Pijunnaqunga?

Partners

Promotional  
campaign

Important  
dates

# PIJUNNAQUNGA

is a tailored internship  
program for  
Nunavimmiut





What is  
Pijunnaqunga?

How it  
Works?

Why  
Pijunnaqunga?

Partners

Promotional  
campaign

Important  
dates

# What is PIJUNNAQUNGA?

or ᐱᓯᓂᓂᓂᓂᓂᓂ in  
Inuktitut means  
“ I CAN DO IT”



Pijunnaqunga is a project initiated and developed through the Sustainable Employment Department of KRG, in collaboration with PS Jeunesse, a non-profit employability organization.

The Pijunnaqunga program  
includes in-depth interviews and  
an intensive training session, plus  
a paid internship in Nunavik  
Regional Organizations with solid  
**mentoring** support.





What is  
Pijunnaqunga?

How it  
Works?

Why  
Pijunnaqunga?

Partners

Promotional  
campaign

Important  
dates

# PIJUNNAQUNGA

Our program Vision



## VISION

Pijunnaqunga aims to increase the **employability** of young Inuit **Nunavimmiut** to hold **significant positions** within Nunavik organizations through an inspiring internship program.



## MISSION

Pijunnaqunga provides unique internship opportunities to **empower young Inuit** Nunavimmiut towards a professional **career** within Nunavik regional organizations.



## VALUES

- Respect
- Leadership
- Self-Development
- Commitment



What is  
Pijunnaqunga?

How it  
Works?

Why  
Pijunnaqunga?

Partners

Promotional  
campaign

Important  
dates

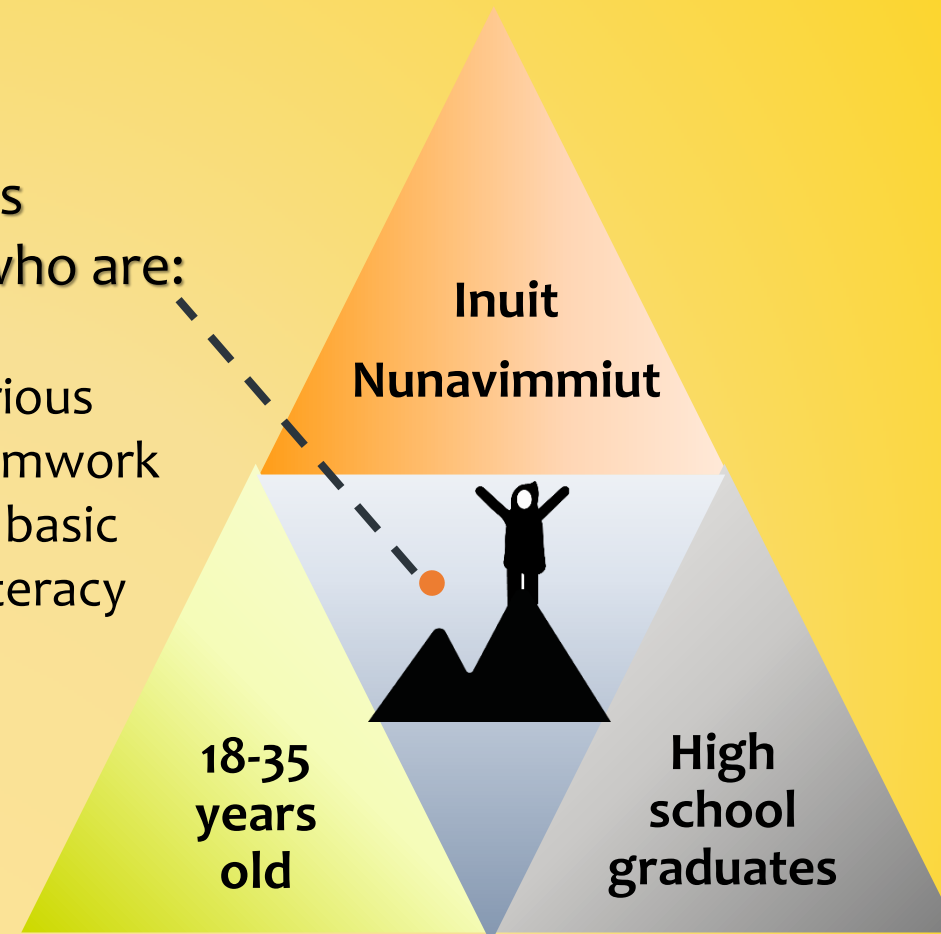
# What is PIJUNNAQUNGA?

Target clientele



Pijunnaqunga aims  
to select interns who are:

- Reliable
- Motivated & Curious
- Willing to do teamwork
- In possession of basic numeracy and literacy skills





What is  
Pijunnaqunga?

How it  
Works?

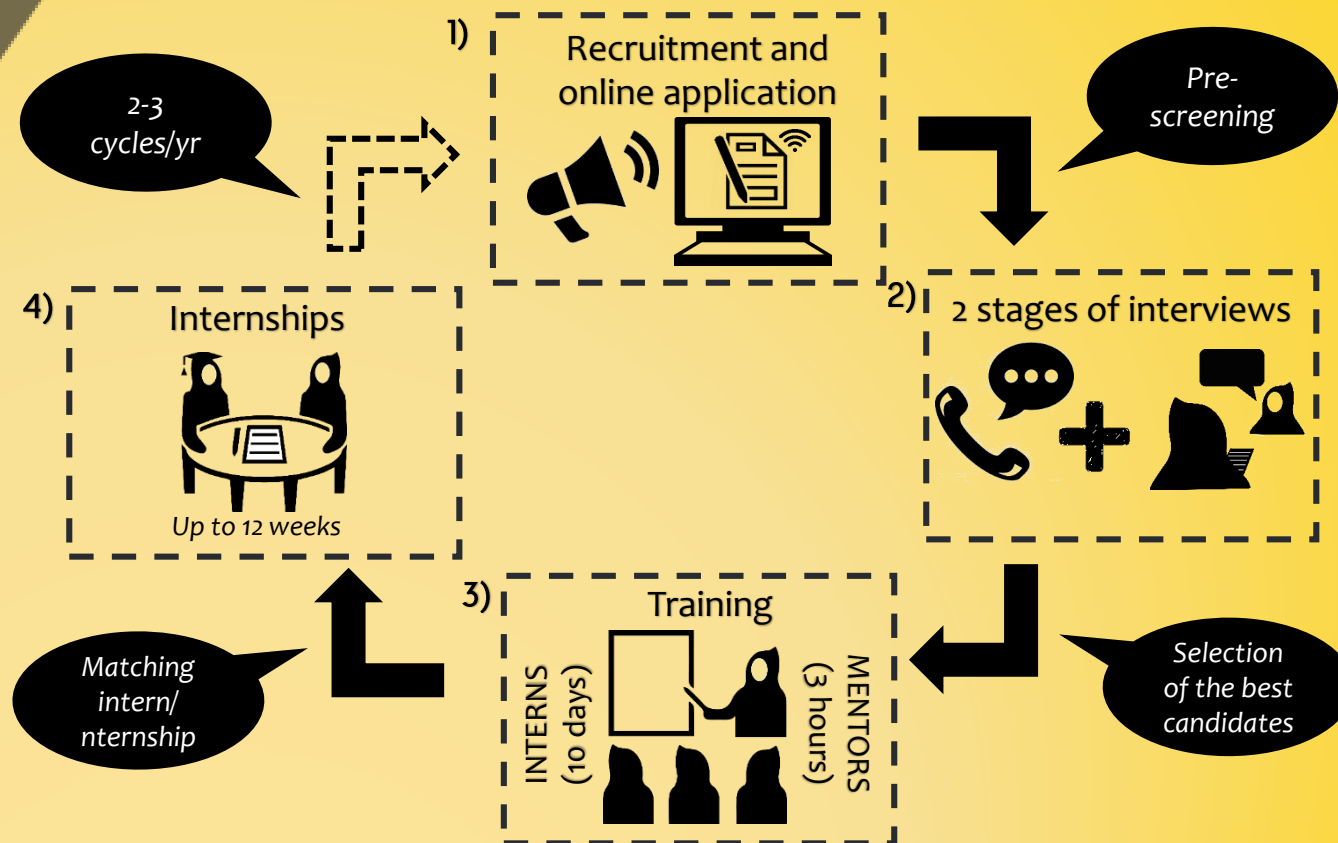
Why  
Pijunnaqunga?

Partners

Promotional  
campaign

Important  
dates

## How it works ?





What is  
Pijunnaqunga?

How it  
Works?

Why  
Pijunnaqunga?

Partners

Promotional  
campaign

Important  
dates

## Why Pijunnaqunga?

Low rate of full time jobs  
occupied by  
Nunnavimmiut

According to the 2015 study  
“Nunavik in Figures”  
**49% of the full-time jobs**  
in Nunavik were occupied by non-  
beneficiaries in 2011





What is  
Pijunnaqunga?

How it  
Works?

Why  
Pijunnaqunga?

Partners

Promotional  
campaign

Important  
dates

# Why Pijunnaqunga?

« KRG councillors want to see more Inuit in Public workforce »

Nunatsiaq News,  
June 1, 2017



“Kativik Regional Government councillors want to see more Inuit move into staff and management roles with Nunavik’s regional government.”

“There was supposed to be on-the-job training available”

“In 2014, the KRG launched a management succession plan to help move long-time Inuit staff into management roles within the organization”

“councillors want to see this happen more often.”

“Issues around Inuit hiring are raised at almost every regional council meeting.”



What is  
Pijunnaqunga?

How it  
Works?

Why  
Pijunnaqunga?

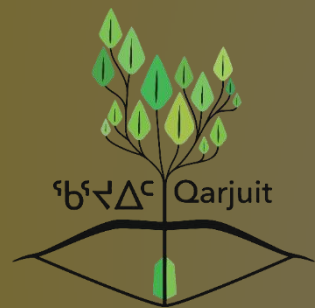
Partners

Promotional  
campaign

Important  
dates

# Why Pijunnaqunga?

Inuit youth is concerned  
about employability



Inuit Youth  
Strategic Action Plan  
2016-2021



✓ Based on **public consultation**  
(Feb-Mar 2016)

✓ The voice of **Inuit youth from every Nunavik community** was represented in this consultation

- **Envisioning to reach higher positions within regional organizations** was one of the main concerns expressed by Inuit Youth





What is  
Pijunnaqunga?

How it  
Works?

Why  
Pijunnaqunga?

Partners

Promotional  
campaign

Important  
dates

# PIJUNNAQUNGA

A solution to Nunavimmiut  
employability concerns



# PIJUNNAQUNGA

is an internship program that  
addresses these employability  
concerns and offers a viable  
solution



What is  
Pijunnaqunga?

How it  
Works?

Why  
Pijunnaqunga?

Partners

Promotional  
campaign

Important  
dates

## Our partners:

Local collaborators



Δρόμους Ανάπτυξης  
YOUTH EMPLOYMENT SERVICES

# LEO

Local Employment Officers



## How it Works?

## Why Pijunnaqunga?

## Partners

## Promotional campaign

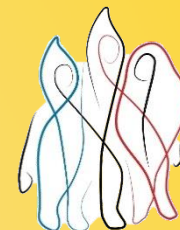
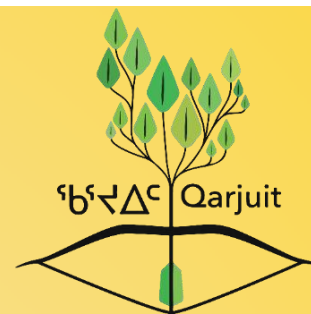
## Important dates

## Our partners:

## Participating & Interested Nunavik Organizations



**LP<sup>®</sup>Λ<sup>®</sup>**  
Société Makivik  
Makivik Corporation



**ᐃᓄᐱᑦ ᐃᓂᑦᑐᓕᓚᓂᑦᑭᑦ ᑲᑎᒪᑖᑦ**  
RÉGIE RÉGIONALE DE LA NUNAVIK REGIONAL  
SANTÉ ET DES SERVICES BOARD OF HEALTH  
SOCIAUX DU NUNAVIK AND SOCIAL SERVICES



ᐅᓄᓕᑦ ᐃᓚᑦᑖᑦ ᐆᓂᓇᓴᓲᑦᑦᑦ  
UNGAVA TULATTAVIK HEALTH CENTER  
CENTRE DE SANTÉ TULATTAVIK DE L'UNGAVA



**ᑲᑎᐱᑦ ᐃᑦᑲᑦᑲᑦᑲᑦ**  
**Kativik Ilisarniliriniq**

**ΔοΔ<sup>c</sup>**  
**Air Inuit**





What is  
Pijunnaqunga?

How it  
Works?

Why  
Pijunnaqunga?

Partners

Promotional  
campaign

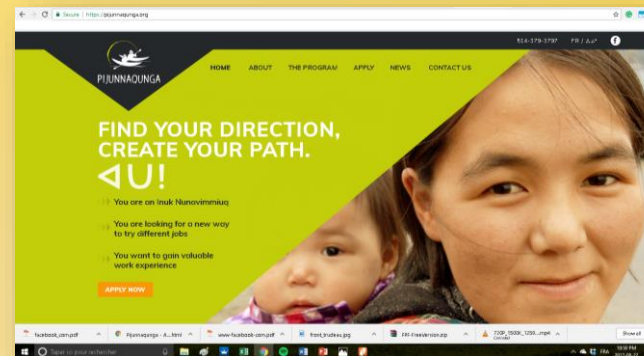
Important  
dates

# Promotional campaign

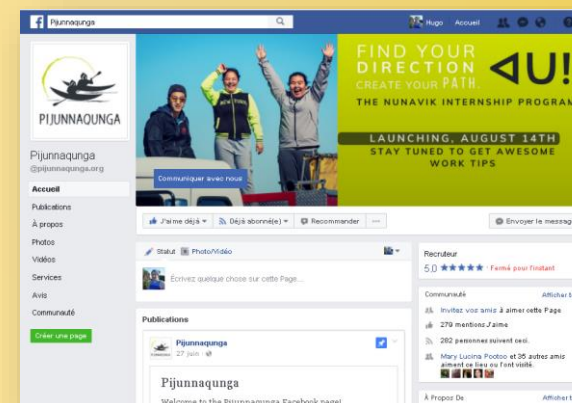
Take a look at  
our website

&

Our  page



<https://www.pijunnaqunga.org/>



<https://www.facebook.com/pijunnaqunga.org/>



What is  
Pijunnaqunga?

How it  
Works?

Why  
Pijunnaqunga?

Partners

Promotional  
campaign

Important  
dates

# Important dates

The best time to  
create an internship  
is *now*!

We may have an  
intern ready to start  
an internship at any  
time.

*\* Internship dates  
are flexible*

Recruitment and  
online application



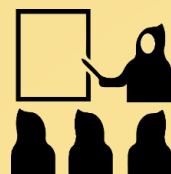
Launch on August 14th 2017  
\*All year long recruitment\*

2 stages of interviews



1<sup>st</sup> cycle in November 2017  
Next planned for May 2018

Training



1<sup>st</sup> cycle in February 2018  
Next planned for June 2018

Internships



First internships in March 2018\* !  
Next planned for September 2018\*





# We want to develop more internships !

We need **your involvement** for implementing Pijunnaqunga internships within **YOUR organization!**

## What can YOU do ?

Take the first step by defining what would be a good internship according to your organization's needs and find motivated mentors!

Yourself, for instance!



ᐅᓄᓕᓐ ᐅᓕᓕᓐ ᐅᓐᓐᓐᓐᓐᓐᓐᓐ  
UNGAVA TULATTAVIK HEALTH CENTER  
CENTRE DE SANTÉ TULATTAVIK DE L'UNGAVA



ᐅᓐᓐᓐ  
Société Makivik  
Makivik Corporation

ᐅᓐᓐᓐ  
Air Inuit



ᐅᓐᓐᓐ ᐅᓕᓕᓐᓐᓐᓐᓐᓐ  
Kativik Iisarniliriniq



FIND YOUR DIRECTION,  
CREATE YOUR PATH

**ΔU!**

**NAKURMIK !**