

NORTHERN VILLAGE OF KUUJJUAQ

By-law No. 2026-02

Concerning the use of the municipal solid waste disposal site and the dumping of waste.

- WHEREAS** the Municipal Council (hereinafter the Council) has the power to secure the peace, order, good government, health and general welfare in the territory of the municipality pursuant to section 166 of *An Act respecting Northern villages and the Kativik Regional Government* (CQLR, c. V-6.1; hereinafter the Kativik Act);
- WHEREAS** the Council has the power to construct, equip and operate plants for the elimination or recycling of waste and to regulate or prohibit the use of places as dumps pursuant to subsection 174 (12) of the Kativik Act;
- WHEREAS** the Council has the power to prohibit the dumping of waste or garbage pursuant to subsection 174 (11) a) of the Kativik Act;
- WHEREAS** this by-law must be adopted and interpreted in light of the laws and regulations in effect in the Province of Québec;
- WHEREAS** a notice of motion for this by-law was duly given during the preceding sitting of the Council held on

THEREFORE, the Council of the Northern Village of Kuujuaq, by this by-law, enacts and decrees as follow:

1. DEFINITIONS

- 1.1 **"Asbestos"** is a fibrous mineral that was used in construction, insulation, and fireproofing materials due to its heat resistance and durability. However, it is hazardous to human health, as its fibers can cause serious respiratory conditions when inhaled.
- 1.2 **"Assistance"** refers to the support provided by Eco-centre staff to visitors or users. This can include helping with unloading materials, guiding individuals on proper sorting, and providing advice on recycling or disposal practices.
- 1.3 **"At cost"** shall mean equipment rental and manpower municipal rates, as adjusted from time to time, and any administrative overhead costs plus 15%.
- 1.4 **"Authorized officer"** shall mean any officer or municipal by-laws enforcement officer of the municipality whose duty is notably to be in charge of the enforcement of the present by-law within the territory under the jurisdiction of the municipality.
- 1.5 **"Biodegradable"** means a substance or product that can be completely decomposed by living organisms.
- 1.6 **"Bulky Item"** means any objects that, due to their large size, cannot be disposed of with household waste (appliance, furniture, etc.).
- 1.7 **"Burnable Items"** Burnable items are materials that can be safely incinerated, often for energy recovery. These items are combustible and leave minimal harmful residues when burned.

Examples:

- **Wood:** Untreated lumber, wooden pallets, and construction debris.
- **Paper Products:** Cardboard and packaging materials.
- **Biodegradable Waste:** Food scraps and yard waste like leaves and branches.

1.8 **“Compost”** means a mature solid product derived from the composting of organic waste. Compost is a stable product, rich in humic compounds, which mainly serves as a soil amendment. It generally appears as a humus-rich soil with a mild smell.

1.9 **“ Compost Site”** is a designated area where organic waste, such as kitchen scraps and garden waste, is decomposed by microorganisms and worms in the presence of air and moisture to produce compost.

1.10 **“Construction debris and waste”** shall mean any unwanted, useless, abandoned, discarded or rejected goods or materials of any kind that are normally generated on a construction site other than hazardous materials.

1.11 **“Contaminated soil”** refers to soil that has been polluted by harmful substances, such as chemicals, heavy metals, petroleum products, pesticides, or biological agents, which can adversely affect plant and animal life, groundwater quality, and human health. The contamination can result from industrial activities, agricultural practices, accidental spills, improper waste disposal, or natural disasters.

1.12 **“ Covered Conveyance in Hauling”** Covered conveyance refers to the transportation of materials or waste using enclosed or covered vehicles, containers, or trailers.

Covering waste helps contain it, preventing it from falling off or being blown away, thus reducing pollution and safety risks. It's essential for maintaining cleanliness, minimizing environmental hazards, and ensuring the safe transport of goods or waste.

This practice ensures compliance with safety regulations under the Quebec Highway Safety Code.

Common Types of Covered Conveyance in Hauling:

- **Enclosed trucks** – Fully sealed transport to prevent materials from escaping.



- **Tarp-covered trailers** – Used for securing loose materials such as gravel, sand, or waste.



- **Sealed containers** – often used for hazardous or sensitive materials to avoid exposure.



- 1.13 " **CRD (Construction, Renovation, and Demolition)** means the waste generated from construction, renovation, and demolition activities. This waste includes materials such as concrete, wood, metals, and plastics.
- 1.14 " **Discarded tires**" mean these are damaged tires that can no longer be reused or retreated or tires with manufacturing defects.
- 1.15 " **Dry Material**" refers to waste that contains minimal or no moisture, such as wood, concrete, metal, and other solid, non-liquid items.
- 1.16 " **Eco-Center**" means a public site arranged for the deposit of recyclable materials, bulky waste, hazardous household waste (HHW), construction, renovation, or demolition (CRD) materials, and recoverable objects, with the aim of encouraging their reuse and recycling.
- 1.17 " **Electronic Devices**" refer to items that use electricity to perform a specific function, such as computers, televisions, smartphones.
- 1.18 " **Elimination**" meaning the final processing or combination of final processes to transform garbage into an environmentally friendly material.
- 1.19 " **End-of-life (EOL) conditions** refer to the stage when an item, product, or material has reached the end of its useful lifespan and can no longer perform its intended function.
- 1.20 An **End-of-Life Vehicle (ELV)** refers to any transportation device that no longer has an engine or motor for propulsion and is no longer functional. This includes cars, trucks, motorcycles, and buses that are no longer operational.
- 1.21 " **EPR (Extended Producer Responsibility)**" is the regulation which aims to encourage producers to design environmentally friendly products by holding them accountable for the entire lifecycle of their products.
- 1.22 " **Final waste**" means waste that is no longer recoverable by recycling or energy recovery. As such, according to regulations, this waste is the only waste that can be buried in a landfill.
- 1.23 " **Furniture**" means any items such as chairs, tables, and cabinets that are no longer in use and are either discarded or repurposed.
- 1.24 " **Hazardous material**" shall mean any material which, by reason of its properties, poses a hazard to health or the environment. This includes materials that are explosive, gaseous, flammable, poisonous, radioactive, corrosive, oxidizing, leachable, or designated as

hazardous by any law or regulation. Radioactive waste is strictly prohibited; therefore, zero radioactive waste will be tolerated under any circumstances.

- 1.25 " **Household appliance**" refers to a device, machine, or piece of equipment used in homes to assist with daily tasks such as cooking, cleaning, food preservation, and climate control. These appliances can be electrical, gas-powered, or mechanical.

Examples of household appliances include refrigerators, washing machines, ovens, microwaves, vacuum cleaners and air conditioners

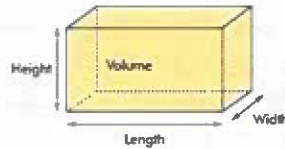
- 1.26 "**Household hazardous material**" refers to hazardous materials generated by residential households. This includes, but is not limited to, both full and empty household products such as:

- Cleaning supplies (laundry detergent, dishwasher detergent, drain cleaner, bleach, Comet)
- Batteries (single-use and rechargeable)
- Light bulbs (fluorescent, LED, and incandescent)
- Used oil and propane tanks
- Aerosols (spray cans, air fresheners, disinfectants)
- Hair dyes and certain cosmetics (acetone, nail polish remover)

For further details, refer to the accepted HHW guidelines

- 1.27 "**Household waste**" shall be used in its usual meaning and includes, without in any way limiting the generality of the foregoing, any solid residue from a house, store or building generated in or from residential domiciles other than hazardous materials.
- 1.28 " **ICI**" refers any Industrial, Commercial, and Institutional waste in the Waste Management sector. It's any waste generated by businesses, industries, and institutions, such as hospitals, schools, and government buildings, bank.
- 1.29 "**Illegal dump**" means a place where various wastes are deposited against regulations
- 1.30 "**Industrial hazardous material**" shall mean all hazardous material that are not generated by residential domiciles.
- 1.31 "**Industrial waste**" shall mean any garbage other than household waste and hazardous material and includes, without in any way limiting the generality of the foregoing, general construction debris and waste as well as industrial, commercial and institutional waste.
- 1.32 "**Measuring**" refers to the process of assessing volume by determining the length, width, and

height of an item or material. To ensure accuracy and compliance, measurements can only be taken by an employee of the Waste Management Sector or an authorized officer who is present at the time of registration.



- 1.33 **“Motorized Vehicle”** refers to any transportation device that has an engine or motor for propulsion, including cars, trucks, motorcycles, and buses.
- 1.34 **“Municipal Solid Waste Disposal Site”** is a designated area for the final disposal of non-hazardous waste that is accepted by the municipality in accordance with the Municipal Hazardous and Solid Waste Management Standards (MHS).
- 1.35 **“Municipal Waste Management Sector”** is the designated area in Kuujuaq for the Municipal Solid Waste Disposal Site, Eco-Centre, Recycling Center and Compost Center.
- 1.36 **“Non-Burnable CRD”** Non-burnable items refer to materials that cannot be safely burned due to their composition or potential to release harmful substances and can be disposed at the Municipal Solid Waste Disposal Site.

Examples:

- **Metals:** Steel beams, aluminum siding, and copper pipes.
 - **Glass:** Windows, mirrors, and glass panels.
 - **Ceramics:** Tiles and porcelain fixtures.
 - **Certain Plastics:** PVC pipes and other plastics that release toxins when burned.
- 1.37 **“Non-reusable CRD”** refers to waste materials generated from construction, renovation, and demolition activities that cannot be reused in their current form. These materials are often damaged, contaminated, or otherwise unsuitable for repurposing. Examples include broken drywall, contaminated wood, or mixed debris that cannot be separated for recycling.
- 1.38 **“Operator”** means a person or entity managing the operations of a waste management facility. This includes overseeing the collection, sorting, treatment, and disposal of waste, ensuring compliance with environmental regulations, and maintaining the facility's efficiency.
- 1.39 **“Person”** shall mean any physical person, whether a municipal citizen or not, a company, partnership, firm, corporation association or public body.
- 1.40 **“Reception”** also known as the **reception desk** refers to the initial point of contact at an eco-centre where visitors or users are welcomed. This area is typically staffed and serves as the hub for providing information, answering questions, and guiding individuals on how to proceed with their waste management needs.

- 1.41 **"Recoverable or salvageable"** refers to items, materials, or components that can be saved, repaired, repurposed, or reused rather than being discarded as waste. This term applies to materials such as wood, metal, or furniture that can be extracted or preserved for future use."
- 1.42 **"Registration"** refers to the process of recording the details of individuals or businesses using the Municipal Waste Management Services. This may include collecting information such as names, contact details, and the type of waste being delivered. Registration helps maintain records for operational and regulatory purposes.
- 1.43 **"Reuse-centre"** means any designated facility where items that are still functional but no longer needed by their original owners are collected, repaired if necessary, and made available for others to use. This promotes the principles of reducing waste and extending the lifecycle of products.
- 1.44 **" Signage"** refers to signs or visual displays used to communicate information, directions, warnings, or rules. Signage plays a crucial role in guiding visitors on proper sorting, disposal practices, and facility regulations.
- 1.45 **" Sorting"** means the process of separating waste materials into different categories based on their type, such as recyclables, organic, and non-recyclables.
- 1.46 **"Sorting Guide"** refers to the guide prepared by the Northern Village of Kuujuaq, which serves as a practical tool to help individuals, communities, and Industrial, Commercial, and Institutional (ICI) sectors properly separate their waste into appropriate categories for disposal. See Appendix III
- 1.47 **" Storage"** In waste management, **storage** refers to the temporary placement of waste in a designated location, facility, or covered means of conveyance, ensuring it remains isolated and protected from the environment and human contact until it can be treated, recycled, or properly disposed of.

Storage methods may include:

- **Containers, bins, and tanks** designed for secure waste containment



- **Covered transport vehicles** for safe movement and temporary holding of waste



- **Waste storage areas** within treatment or disposal facilities to manage accumulation

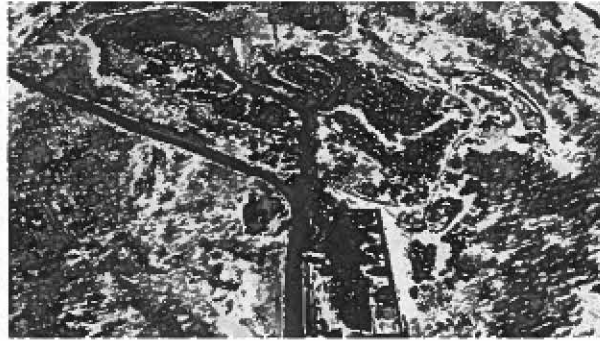
These storage practices help prevent contamination, control odours, ensure regulatory compliance, and minimize environmental impact.

- 1.48 **“Styrofoam”** A lightweight, resilient foam made of polystyrene.
- 1.49 **“ Verification”** involves the process of checking and confirming the type and quantity of materials or waste brought to the eco-centre. This ensures that the items comply with the facility's guidelines and can be appropriately sorted, processed, or disposed of.
- 1.50 **“Visual Check”** refers to the process of visually examining waste or materials to determine their type, condition, and compliance with facility guidelines, as well as their suitability for sorting, recycling, or disposal.
- 1.51 **“Waste container”** shall mean a garbage box, garbage room or dumpster. Here's some kind of garbage box and dumpster that we have:



- 1.52 **“Waste generator”** shall mean the person, both natural and legal, that produces waste.
- 1.53 **“Waste Management Sector”**
The Waste Management Sector includes facilities responsible for the collection, processing, and disposal of everyday waste generated by households, businesses, and institutions. This includes food waste, packaging materials, paper, and plastics.
- 1.54 **“Waste Management Sector (WMS)”** include Eco-Centers, Recycling Centers, and Composting Areas. These facilities are regulated to:
- Minimize environmental impact
 - Control odours and air pollution
 - Prevent soil and water contamination

- Ensure public health and safety



2 Waste Management Sector (WMS) include the following items:

2.1.1 Municipal solid waste disposal site. Scope: is a end of life (EOL) area for the disposal waste at the discretionary management of the Northern Village of Kuujuaq.

2.1.2 Purpose: To provide a secure and controlled space for the final disposal of residual waste, ensuring safety and proper containment to minimize soil, air, and water pollution.

2.2 A municipal Eco-Center is hereby officially created.

2.2.1 Scope: The Eco-Center serves as a centralized facility for the reception, sorting, and safe management of household, hazardous, bulky, and recyclable waste.

2.2.2 Purpose: To provide residents with a convenient location for responsibly disposing of materials that cannot be included in regular waste collection, reduce environmental impact, and promote waste separation at source and diversion of the materials from the waste stream with EOL at the municipal solid waste disposal site, through reuse and recycling.

2.3 A Municipal Compost Center is hereby officially created.

2.3.1 Scope: The Compost Center is dedicated to the collection and processing of organic materials, including food scraps and yard waste, to produce compost.

2.3.2 Purpose: To transform organic waste into nutrient-rich compost for agricultural and landscaping use, reduce greenhouse gas emissions from organic waste in landfills, and support soil health.

2.4. A Municipal Recycling Center is hereby officially created.

- **Scope:** The Recycling Center is responsible for collecting, sorting, and processing recyclable materials, including paper, plastics, metals, and glass. It also educates residents about proper recycling practices to maximize efficiency and minimize contamination.
- **Purpose:** To encourage the recycling of reusable materials and divert recyclable waste from landfills, thereby reducing environmental pollution and conserving natural resources.

3. HOURS OF OPERATION

3.1 The hours of operation of the Kuujjuaq Waste Management Sector shall be the same hours of operation for the Eco-Center, the Compost Center.

Year-Round Hours of Operation.

- **Municipal Solid Waste Disposal Site:**
 - Monday to Friday: 9:00 a.m to 5:00
 - Saturday: 10:00 a.m. to 4:00 p.m.

(Closed between 12h00-13h00)

 - Sunday: Closed

- **Municipal Eco-Centre:**
 - Monday to Friday: 9:00 a.m to 5:00 p.m. (Closed between 12h00-13h00)
 - Saturday: 10:00 a.m. to 4:00 p.m.
 - Sunday: Closed.
- **Compost Centre:**
 - Monday to Saturday: 9:00 a.m. to 4:00 p.m. (Closed between 12h00-13h00)
 - Sunday: Closed.
- **Recycling Centre:**
 - Monday to Friday: 8:00 a.m. to 6:00 p.m. (Closed between 12h00-13h00)
 - Saturday: 9:00 a.m. to 4:00 p.m.
 - Sunday: Closed.

- **Arrival Rule:** Visitors must arrive at least **30 minutes before the posted closing time** for each facility. Those arriving after this time may be **refused access** and required to return the next scheduled operating day.

3.2 **Kuujjuaq Waste Management Sector** includes Municipal Solide Waste Disposal. The Eco-Center, Compost Centre and Recycling Center shall be only close on Sunday and on Statutory holiday.

3.3 Service provided outside regular

Service provided outside regular hours shall be referred to as a recall. Each recall shall be subject to an additional charge of \$2,000, excluding the disposal fee outlined in Appendix A of this by-law.

3.4 A re-call

A re-call as per section 3.3, shall be only between 13h00 and 17h00.

4. OPERATION OF THE MUNICIPAL SOLID WASTE DISPOSAL SITE

4.1 The municipality is in charge of the operation of the municipal solid waste disposal site and, without in any way limiting the generality of the foregoing, the only person allowed to monitor the burning of garbage.

4.2 Eco-Centre, Recycling Centre, and Compost Center.

4.2.1 The municipality oversees the operation of the Eco-Center, Recycling Center, and Compost Center. These facilities are designated for the sorting, recovery, and processing of various types of waste materials.

4.2.2 Individuals may freely deposit materials at the Eco-Center, Recycling Center, or Compost Center, provided they comply with the established standards of these facilities.

4.2.3 Eco-Centre rules of operation:

- **Sorting:** Materials must be sorted before arrival at the site.
- **Presentation:** Upon arrival, individuals must present the sorted materials to a centre worker for inspection. Deposits must match the declared material type and be placed in the designated areas of the Eco-Center, Recycling Center, or Compost Center, as instructed by the worker.
- **Accepted Materials:** The Eco-centre accepts household hazardous waste, bulky items, electronic devices, and CRD (construction, renovation, demolition) waste.
- **Declaration:** Hazardous waste must be declared at the reception desk upon arrival.
- **Fees:** Fees apply only to businesses, institutions, and construction companies generating waste and must be paid to the Municipality of Kuujjuaq.
- **Reusable Items:** Any items deemed reusable must be directed to the Reuse Center when applicable.

4.2.4 Recycling Centre rules of operation:

- Only clean, dry, and sorted recyclable materials will be accepted at the facility.
- Materials must be categorized into specific types, such as paper, plastics, metals, and glass, and placed in designated containers.
- Unauthorized removal or scavenging of materials from the facility is prohibited.
- The recycling centre must maintain records of materials collected, processed, and diverted from landfills.

4.2.5 Compost Center Rules of operation:

- Organic waste accepted at the compost centre includes food scraps, yard waste, and biodegradable items.
- Items such as plastic, treated wood, and non-biodegradable materials are prohibited.
- Compostable materials must be free from contaminants, such as glass or metal, to ensure the quality of the compost.

4.2.6 All users must adhere to the guidelines and rules specific to each facility to ensure proper

usage and compliance with municipal standards.

4.3 Whoever wishes to dispose of any waste from the Industrial, Commercial, and Institutional (ICI) sector at the Kuujjuaq Waste Management Sector must have formally and mandatorily completed the registration and signed the contract set forth in Appendix II, which forms an integral part of this by-law.

4.4 Whoever damages the roads, signage, fencing or the infrastructure found within the municipal solid waste disposal site will be held responsible and will be charged "at cost" for work performed by or on behalf of the municipality in order to repair the damages.

5. OBLIGATIONS

5.1 Every waste generator shall maintain, in good condition, in each location he/she uses, sufficient covered or enclosed waste containers to contain the solid waste normally originating at that location during the course of one week.

5.1.2 All waste containers shall be accessible from the public roadway.

5.1.3 All waste deposited in a waste container must first be placed in a garbage bag.

5.1.4 Each person shall maintain, at his own expense, unimpeded access to his waste containers.

5.2 Obligations for eco-centre, recycling centre, and compost centre users

5.2.1 Every waste generator shall ensure that all materials brought to the Eco-Center, Recycling Center, or Compost Center are sorted and prepared in accordance with the guidelines provided by the municipality.

5.2.2 For the Recycling Center, all recyclable materials must be clean, dry, and free of non-recyclable items. For the Compost Center, organic waste must be free of contaminants such as plastic, glass, or metal.

5.2.3 Materials deposited at the Eco-Center, Recycling Center, or Compost Center must be placed in the designated areas as instructed by facility staff or signage.

5.2.4 Users shall respect the operational rules, schedules, and safety regulations of the Eco-Center, Recycling Center, and Compost Center at all times.

5.2.5 Signage

The Eco-centre signage must be clear, visible, and properly labelled to guide users in sorting their materials as per the sorting guide provided by the Northern Village of Kuujjuaq. **The accepted material list may be modified at any time at the discretion of the waste management sector of the Northern Village of Kuujjuaq**, along with any related signage and the list of not accepted material, without the need to pass a resolution under the Waste Management By-law.



Signs must indicate the following categories:

Category #1:  WOOD: Clean lumber, pallets, painted/treated wood.

Category #2:  CONSTRUCTION/DEMOLITION: Drywall, waste, sinks, showers, mineral wool

Category #3:  METAL: Scrap metal, pipes, bikes, tire rims (tires removed).

Category #4:  ELECTRONICS: Computers, TVs, phones, printers, audio/video.

Category # 5:  BULKY ITEMS: Furniture (desk, tables). (Ask attendant where to place) &  APPLIANCES: Stoves, washing machines, dryers, etc. (Ask about fridges/freezers).

Category # 6  BATTERIES &  LIGHTBULBS:

Category# 7 Hazardous household waste

Category # 8  PROPANE TANKS: valves intact.

Category # 9  Extinguisher

Category # 10  USED PAINT: In original containers

Category # 11  USED OIL: Including oil filters and antifreeze, oil filters.

Category # 12  TIRES: Car, truck, ATV, snowmobile tires (rims MUST be removed).

Each sign should include simple wording and visual aids, if possible, to ensure accessibility and understanding for all users. Proper signage placement must align with the designated collection areas for each category. See Appendix III

5.6 Other rules of conduct

5.6.1 Entry into any restricted area designated as "Employees Only" is strictly prohibited. This restriction is in place for safety reasons, ensuring that only authorized personnel access these areas to prevent accidents and maintain operational security.

5.6.2 It is forbidden to use verbal or physical violence on the site of the Eco centre. The Eco centre operator denies access to the Eco centre to a client using verbal or physical violence or who willingly damages movable property located on the site.

5.6.3 The admissible client must clean up the space around their vehicle before leaving the Eco centre.

5.6.4 The Kuujuaq Eco-Center has the right to refuse access to a vehicle that is longer than 11 meters.

5.6.5: It is forbidden to drive faster than 5 km/h within the Eco-Centre site.

5.6.6 The Northern Village of Kuujjuaq may modify signage at its discretion without updating the by-law. Therefore, all Eco-Center users must comply with posted signs at all times.

6. CONSTRUCTION DEBRIS AND WASTE

6.1 Any construction or building material being used or stored on private property must be stored on the said property, in a neat and orderly fashion otherwise it will be defined as construction debris and waste under the terms of this by-law.

6.2 This rule applies exclusively to businesses and representatives of construction companies; it does not apply to regular citizens.

Anyone disposing of construction debris and waste at the Kuujjuaq Waste Management Sector as per section 4.3 must have formally and mandatorily completed the registration and signed the contract set forth in Appendix II, which forms an integral part of this by-law.

6.4

Except under subsection 6.5, waste generators must sort debris daily, place it in covered containers, and transport it in a covered vehicle to the municipal solid waste disposal site without delay, following the regulations of the site and the Kuujjuaq Eco-centre.

- **Daily sorting:** All debris and waste must be sorted (segregated) every day.
- **Covered containers:** The sorted waste must then be placed into covered containers to keep it secure and prevent spillage or exposure.
- **Transportation to Waste Management Sector:** The waste must be transported to the municipal solid waste disposal site or Eco-Center in a covered conveyance (such as a covered truck) to avoid littering or contamination during transit.
- **Reasonable Delay:** The waste should be hauled to the disposal site without unnecessary delays, ensuring timely removal.

6.5

This article specifies an exception to the rule in Article 6.4. It applies only when covered containers are not available:

- **Daily Disposal Without Containers:** Even without containers, all debris and waste must still be sorted daily.
- **Covered Conveyance:** The waste must be transported using a covered conveyance to maintain safety and cleanliness.
- **Immediate Disposal:** Waste must be disposed of at the municipal solid waste disposal site.

It is important to understand the key difference between the Two

- Article 6.4 requires the use of covered containers for waste, while Article 6.5 provides an exception when such containers aren't available.
- Article 6.5 emphasizes the daily removal of waste without delay when containers are not an option.

6.6 If the waste generator fails to properly dispose of said construction debris and waste within 72 hours of a written notice from the authorized officer, the municipality may dispose of the construction debris and waste at the expense of the waste generator.

7. HAZARDOUS MATERIAL

7.1 No one shall discard items carelessly or without consideration for rules, safety, or environmental impact. It implies improper disposal methods, such as throwing waste in unauthorized locations, mixing hazardous materials with regular waste, or disregarding designated procedures for safe handling and disposal.

7.2 No one is allowed to dump hazardous material into the municipal solid waste disposal site.

7.3 No person shall dispose of hazardous material in any waste container or any other place without the express authority of the authorized officer, who shall designate the manner and place in which it shall be disposed of.

7.4 Collection, transportation, handling, storage and disposal of industrial hazardous material is the sole responsibility of the waste generator and must be done in accordance with the laws and regulations in effect in Province of Québec. Centre for collection, storage and handling of industrial hazardous material are available in Nunavik prior to transportation and disposal south of the 55th parallel.

7.5 Household hazardous material shall be stored by the waste generator until the municipality holds a "household hazardous material collection" when the waste shall be brought to an area prescribed by the authorized officer for disposal.

8. ASBESTOS

8.1 No one shall dispose of materials that contain asbestos at the municipal solid waste disposal site or any other place.

8.2 All materials that contain asbestos must be sent to an authorized disposal site south of the 55th parallel.

9. ASPHALT SHINGLES

9.1 No one shall dispose of asphalt shingles at the municipal solid waste disposal site or any other place.

9.2 All asphalt shingles must be sent to an authorized disposal site south of the 55th parallel.

10. CONTAMINATED SOIL

10.1 No one shall dispose of contaminated soil at the municipal solid waste disposal site.

10.2 All contaminated soil must be sent to a treatment centre for decontamination according to the laws and regulations in effect in the Province of Quebec. Treatment centres for decontamination are available in Nunavik and south of the 55th parallel.

10.3 Collection, transportation, handling, storage and disposal of contaminated soil is the sole responsibility of the waste generator and must be done in accordance with the laws and regulations in effect in the Province of Quebec.

11. STYROFOAM

11.1 No generator, contractor or operator associated with any institutional, Commercial or Industrial (ICI) project shall deposit, deliver, or attempt to dispose of Styrofoam or any expanded polystyrene (EPS) material at the municipal solid waste site.



12. MOTORIZED VEHICLES

12.1 No one shall dispose of a motorized vehicle without the prior written approval of the authorized officer.

12.2 All motorized vehicles must be emptied of all hazardous materials prior to disposal at the Waste Management Sector.

12.3 No person shall keep more than one motorized vehicle that is not in working condition on their lot, unless the vehicle is being actively repaired or restored. Such vehicles must be properly and safely stored to ensure they do not interfere with municipal or emergency services, nor cause a nuisance, danger, or hazard to the citizens of the community

12.4 No person shall keep tires outside of a building unless they are properly stored to prevent interference with municipal or emergency services and to avoid causing a nuisance, danger, or hazard to the community.

13. NUISANCE CAUSED ON PUBLIC PROPERTY

13.1 Any person who soils public property, including, but not limited to roads or streets, laneways, alleys, or public buildings, by depositing there or throwing waste, paper, empty bottles, empty cans, foul substance, scrap metal, dirty waters, oil, contaminants, construction materials or any other object, material or substance shall

13.2 Any person who soils public property must clean the said premises.

13.3 Cleaning must be performed immediately and safely, or, depending on circumstances, within a deadline prescribed by the authorized officer, taking into account available resources and equipment.

13.4 If the person who soiled public property fails to clean up the soiled public property within 48 hours of a written notice from the authorized officer, the municipality may clean up the soiled public property at the expense of the person responsible.

14. INSPECTION OF PROPERTY

14.1 An authorized officer has the right, if he believes on reasonable grounds that an offence against this by-law has been committed, to visit and examine all moveable and immovable property, as also the interior or exterior of any house, building or edifice, in order to ascertain where his by-law has been contravened.

14.2 The owner, lessees or occupants of the property shall allow the authorized officer to make a such a visit or examination within normal business hours.

15.PENALTIES

15.1 Every person who contravenes any of sections 5.1 to 5.4 and 10.1 of this by-law commits an offence and is liable, upon penal proceedings, to a minimum fine of 1 hundred dollars (\$100), with costs. Each day on infringement constitutes a separate offence.

15.1.1 In the case of an individual:

- a) for a first offence, to a fine of \$100
- b) for a second offence, to a fine of \$300
- c) for any additional offence, to a fine of \$500

15.1.2 In the case of a corporate body:

- a) for a first offence, to a fine of \$10, 000
- b) for a second offence, to a fine of \$15, 000
- c) for any additional offence, to a fine of \$ 25, 000.

15.2 Every person who contravenes any of sections 4.1 to 4.4, 6.1 to 6.4, 7.1 to 7.6, 8.1 and 9.1 to 9.4 of this by-law commits an offence and is liable, upon penal proceedings, a fine as determined in section 15.2.1& section 14.2.2 Each day of infringement constitutes a separate offence.

15.2.1 In the case of an individual:

- a) for a first offence, to a fine of \$300;
- b) for a second offence, to a fine of \$500;
- c) for any additional offence, to a fine of \$1,000;

14.2.2 in the case of a corporate body:

- a) for a first offence, to a fine of \$ 15 000;
- b) for a second offence, to a fine of \$ 25 000;
- c) for any additional offence, to a fine of \$100,000.

15.3 The Court convicting a person for the breach of any section of this by-law may, in addition to any fine it may impose, issue and order to enjoin that person to refrain from committing any further such offence and or cease to carry on any activity specified in the order and or, if such person is the holder of a permit, license or certificate granted under this by-law, suspend such permit, license or certificate for the period that it deems appropriate, or revoke the same, or prohibit the renewal thereof during the period that it deems appropriate.

15.4 An authorized officer may issue a statement of offence pursuant to this by-law

15.5 Delays for the payment of penalties and costs imposed by virtue of the present section and consequences of failure to pay a forementioned penalties and costs are established in accordance with the provision of the Code of penal procedure of Québec (CQLR, c. C- 25.1).

15.6 In the case of service outside regular hours, a minimum recall fee of \$2,000 shall be billed to the waste generator, as prescribed in section 3.3 of this by-law. This non-negotiable charge will be added to the fee for the disposal of materials at the designated site.

This policy applies exclusively to businesses, institutions, and construction companies.

If a recall occurs outside the designated call-back hours established in section 3.4 of this by-law, an additional fee of \$3,000 shall apply, bringing the total recall fee to \$5,000. This amount will be added to the fee for the disposal of materials at the site

15.7 Any contractor or representative of a company or institution who fails to report to the registration office, refuses to identify themselves, or declines a visual inspection of materials brought to the site will automatically incur a fine of \$12 500.

16. APPLICATION

16.1 The provisions of this by-law apply to the whole territory under the jurisdiction of the municipality.

16.2 Yearly Indexation of Fees

Each fee will increase by 3.5% annually due to indexation. As a result, the following rates will be established accordingly.

17. REPEAL OF PREVIOUS BY-LAW

17.1 This by-law supersedes and replaces any previous by-law enacted by the Council, for the same purposes, and any such by-law is hereby repeated.

18.COMING INTO EFFECT

18.1 Should any section of this by-law be totally or partially voided by a Court, it's other provisions shall remain valid

18.2 The present by-law shall come into effect the date of its publication in accordance with section 138 of the Kativik Act.

19. VERSIONS

19.1 In the event of a discrepancy between the English, French and Inuktitut versions, the English version shall prevail.

20. COPY

20.1 Once published, the Secretary-Treasurer shall transmit a copy of the present by-law without delay to the Kativik Regional Government as per section 160 of the Kativik Act.

IN FAVOUR: 6

OPPOSED: 0

ABSTENTIONS: 0

ABSENTEES: 1

DATE OF ADOPTION: February 26, 2026

MAYOR'S SIGNATURE: 

ASSISTANT SECRETARY-TREASURER'S SIGNATURE: 

DATE OF PUBLICATION: February 26, 2026

APPENDIX I

**RATES APPLICABLE TO INDUSTRIAL, COMMERCIAL, INSTITUTIONAL (ICI) AND
CONSTRUCTION WASTE DUMPING UNDER SECTION 4.5, 6.2 and 7.4 of By-Law 2026-02**

Rates in Force as of upon approval on the new by-law

RATES FOR DISPOSAL OF SORTED CONSTRUCTION DEBRIS (\$166/M³)

1. Pick-up truck:	\$166 per cubic meter
2. Pick-up extension (Trailer or equivalent):	\$166 per cubic meter
3. Six-wheel truck ($\pm 6\text{m}^3$):	\$ 830/load
4. Ten-wheel truck:	\$1826/load
5. Articulated truck:	\$3652/load
6. Loader (Bucket):	\$332/load
7. Contained construction material:	\$166/m ³
8. General rate for bulky waste:	\$166/m ³

OTHER RATES: PER ITEM

9. Car/Truck body:	\$ 664
10. Snowmobile/ATV:	\$ 332
11. Large Appliance (white goods including water heater tanks):	\$ 208
12. Fridge/Freezer/Air conditioning Units (including Freon Removal): \$200 (66% increase: \$332)	
13. Automotive battery:	\$ 83
14. Oil tank:	\$166
15. Drum (empty):	\$50
16. Tires:	\$58
17. Oversized tires ($\geq 48.5''$)	\$830
18. Water or sewage reservoir (empty):	\$332

OTHER INDUSTRIAL HAZARDOUS MATERIAL DISPOSAL IS THE SOLE RESPONSIBILITY OF

THE WASTE GENERATOR.

N.B: The above does not include rates for equipment and manpower.

APPENDIX II

Waste Management Sector Registration Contract

This contract is made between: _____ (hereinafter referred to as "the Company") AND The Waste Management Sector of the Northern Village of Kuujjuaq

1. Purpose

This contract is made as per Section 4.3 of the by-law regulating the management and operation of the Kuujjuaq Waste Management Sector, which includes the Municipal Solid Waste Disposal Site, the Kuujjuaq Eco-Center, the Kuujjuaq Recycling Center, and the Kuujjuaq Compost Centers.

The Company agrees to comply with all applicable waste management regulations and policies as outlined in this by-law, governing the storage, transportation, and disposal of waste within the Northern Village of Kuujjuaq.

2. Company Information

Company Name:	
Business Address:	
Contact Person # 1:	
Phone Number:	
Email Address:	
Contact Person # 2:	
Phone Number:	
Email Address:	
Type of Waste Handled:	

3. Term of Contract and Renewal

This contract shall take effect on [Effective Date] and remain in force for a period of one (1) year.

Following the initial term, this contract shall automatically renew for an additional one (1) year unless either party provides written notice of non-renewal at least 10 days prior to the end of the current term.

4. Acknowledgment of By-Law Compliance

The Company acknowledges that it has received and read a copy of the applicable waste management by-law issued by the Northern Village of Kuujjuaq. The Company understands and agrees to adhere to all rules, regulations, and operational guidelines, including but not limited to:

- Proper storage of waste to prevent environmental contamination.
- Safe transportation of waste, ensuring containment and regulatory compliance.
- Timely reporting of waste-related incidents or violations.

- Proper disposal methods as designated by municipal standards.

5. Waste Handling Requirements

The Company further acknowledges and agrees to comply with the following operational guidelines:

- **Sorting:** All waste materials must be sorted before arrival at the designated site.
- **Presentation:** Upon arrival, sorted materials must be presented to a centre worker for inspection. Deposits must match the declared material type and be placed in the designated areas of the Eco-Center, Recycling Center, or Compost Center, as instructed by the worker.
- **Accepted Materials:** The Eco-centre accepts household hazardous waste, bulky items, electronic devices, and CRD (construction, renovation, demolition) waste.
- **Declaration:** Hazardous waste must be declared at the reception desk upon arrival.

6. Fees and Payment

The Company agrees to pay all applicable fees associated with waste management services as outlined in the municipal fee schedule. Fees may include but are not limited to:

- **Registration Fees:** [\$ 250]
- **Disposal Fees:** [\$ Amount] Payments must be made in accordance with the terms set by the Waste Management Sector of the Northern Village of Kuujjuaq.

7. Liability

The Company shall be solely responsible for any damages, environmental contamination, or regulatory violations resulting from improper waste handling. The Municipality shall not be liable for any consequences arising from the Company's failure to comply with municipal regulations.

8. Termination

Either party may terminate this contract before its renewal period by providing **30 days' written notice**. Termination may also occur immediately if the Company fails to comply with municipal waste management regulations, leading to fines or authorization revocation.

9. Dispute Resolution

In the event of a dispute, both parties agree to a first attempt resolution through mediation. If mediation fails, the matter shall be referred to arbitration or legal proceedings as per applicable laws.

10. Confidentiality

Both parties agree to maintain confidentiality regarding any proprietary information shared during the course of this agreement. Sensitive data related to waste disposal operations or company details shall not be disclosed to third parties without prior consent.

11. Reporting Requirements

The Company agrees to provide **quarterly waste management reports** detailing quantities handled, types of materials disposed of, and any incidents or non-compliance issues. Reports must be submitted to the Municipality for review and record-keeping.

12. Force Majeure

Neither party shall be held liable for failure to fulfill contractual obligations due to unforeseen circumstances such as natural disasters, government mandates, or other emergencies beyond their control.

13. Amendments

Any modifications or amendments to this contract must be agreed upon in writing by both parties. Changes shall be documented and signed by authorized representatives before implementation.

14. Agreement to Follow Regulations

By signing below, the Company confirms that it has read, understood, and agrees to comply with all applicable waste management regulations and policies.

Signed and Agreed On: Date: _____

Authorized Representative (Company): _____

Municipal Representative (Waste Management Sector): _____